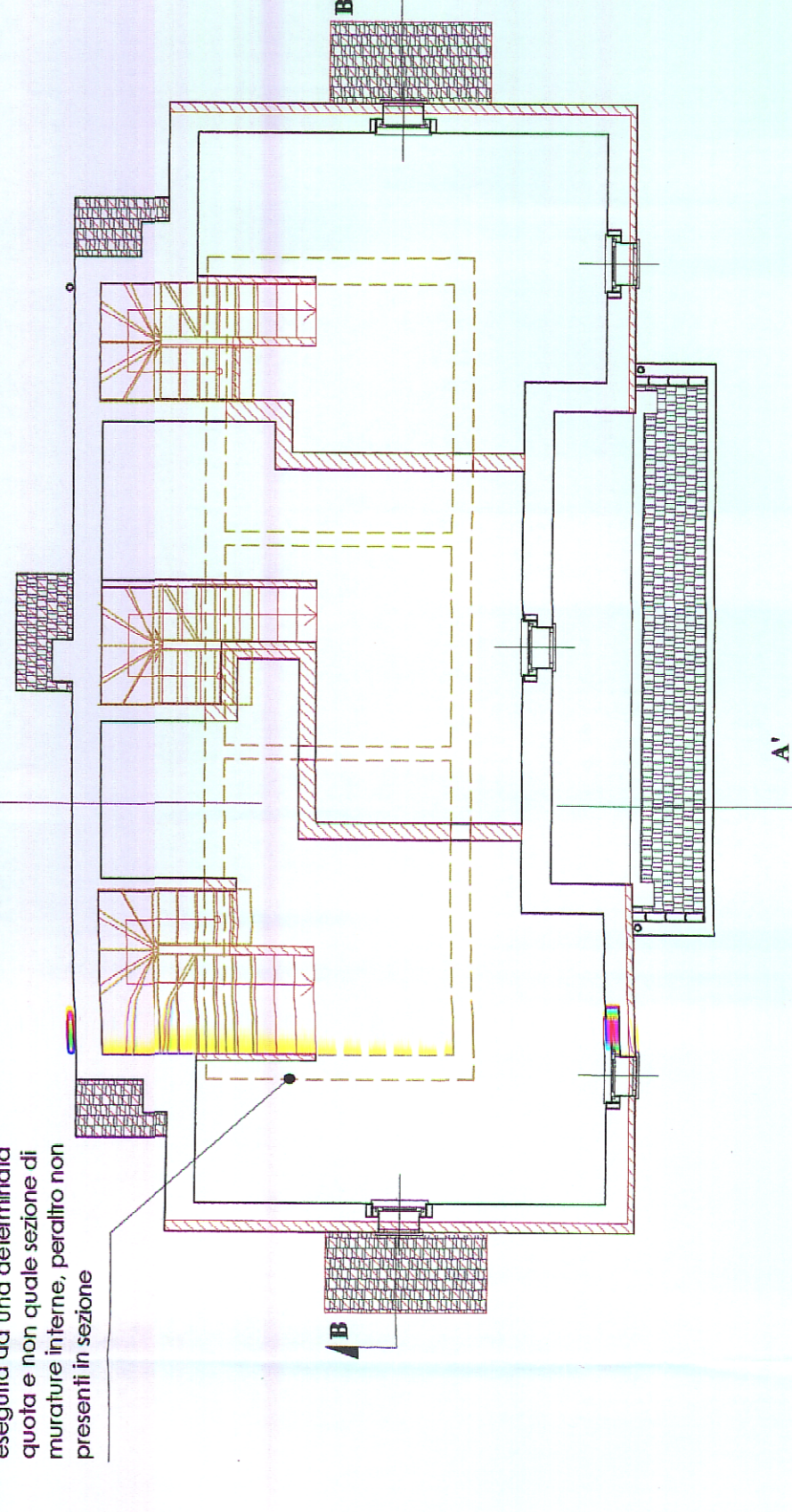
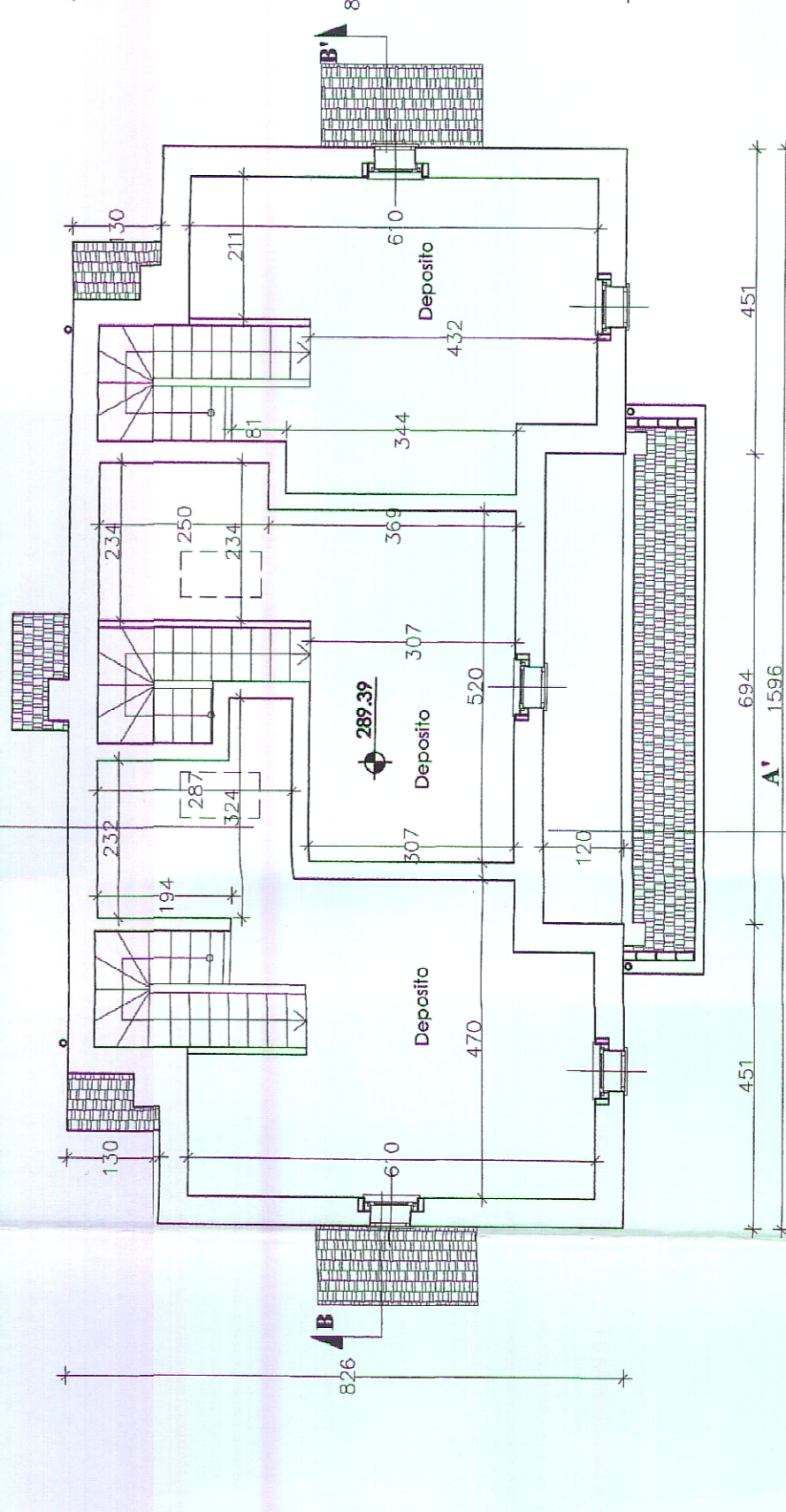
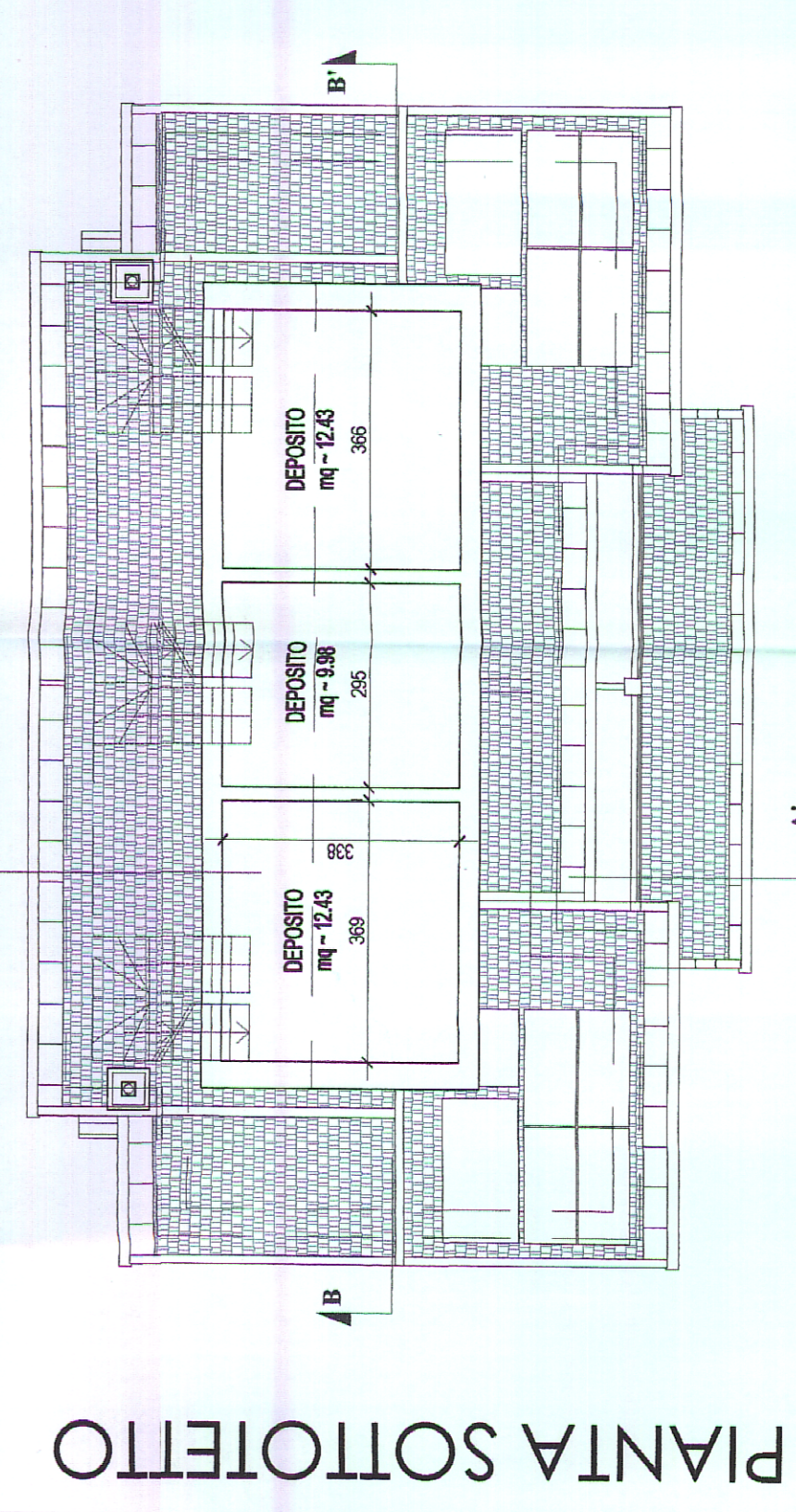
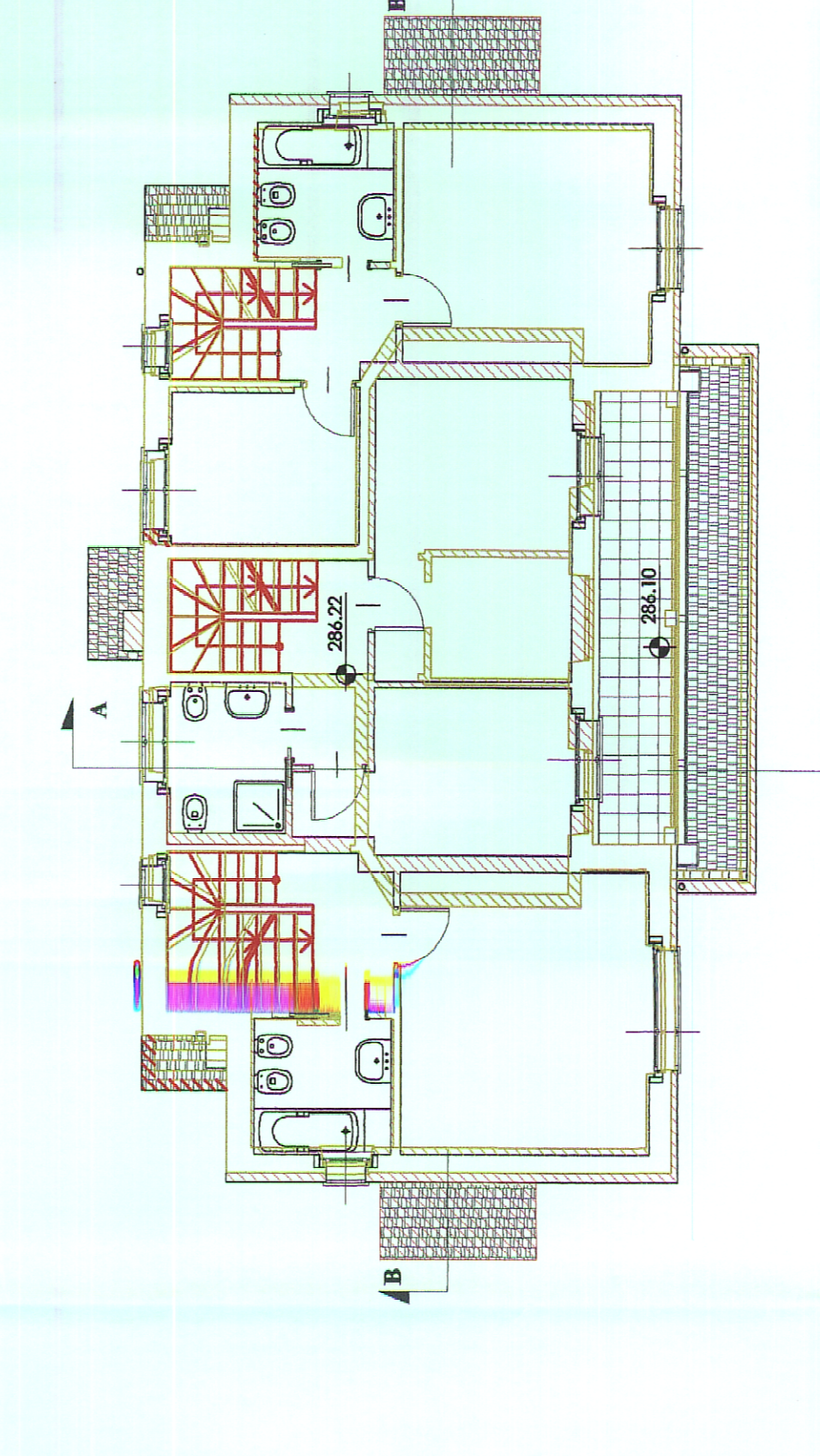
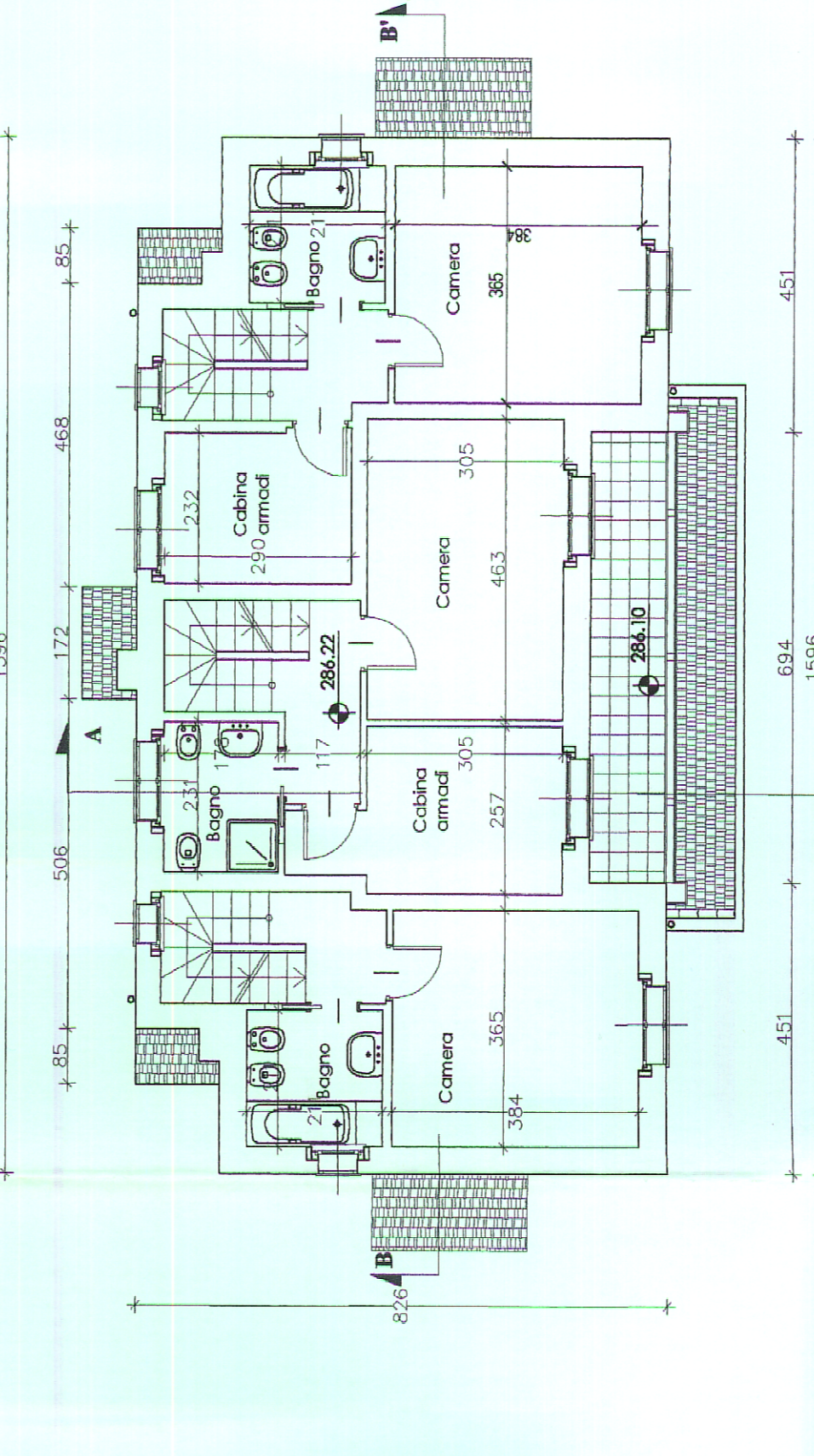
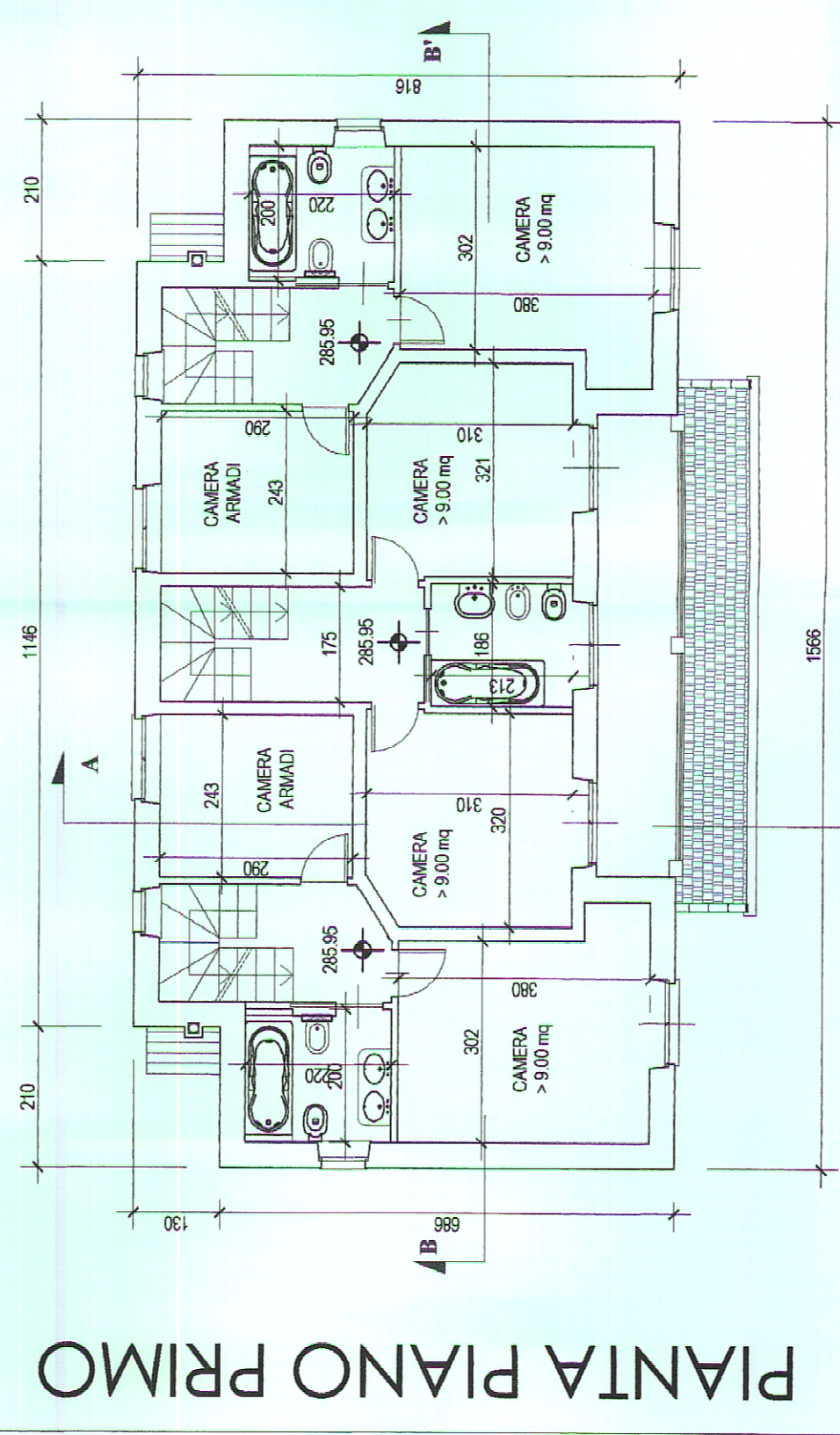
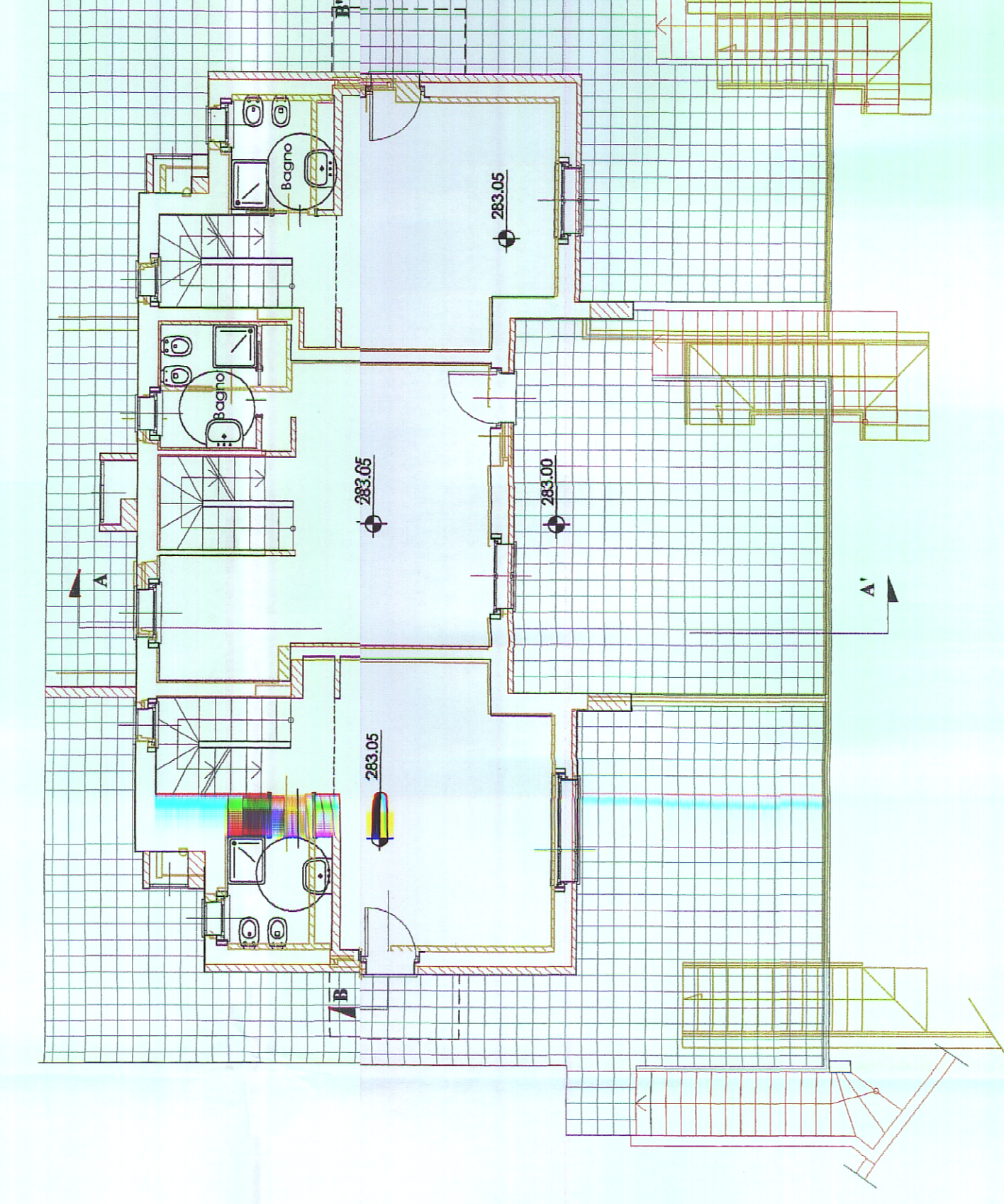
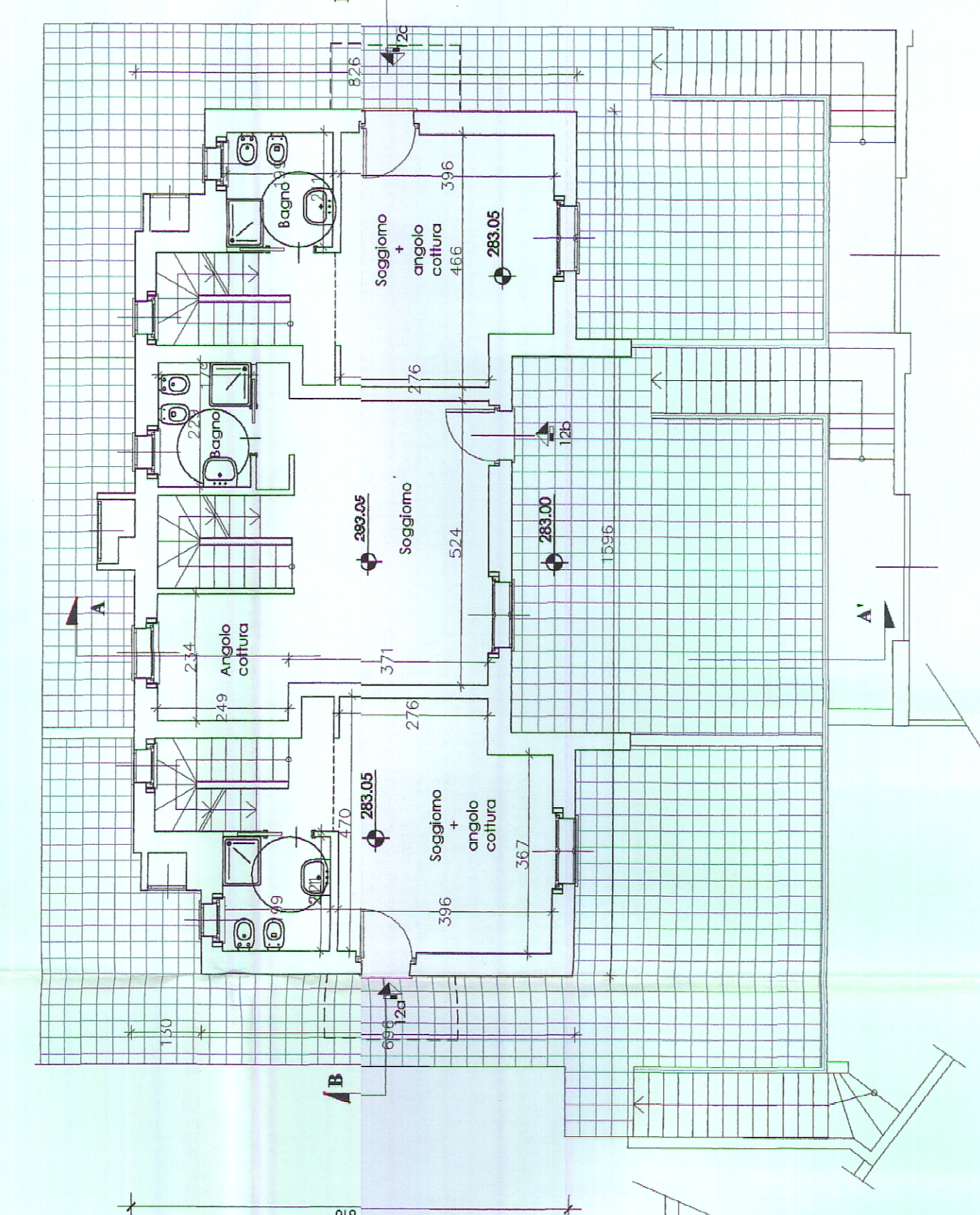
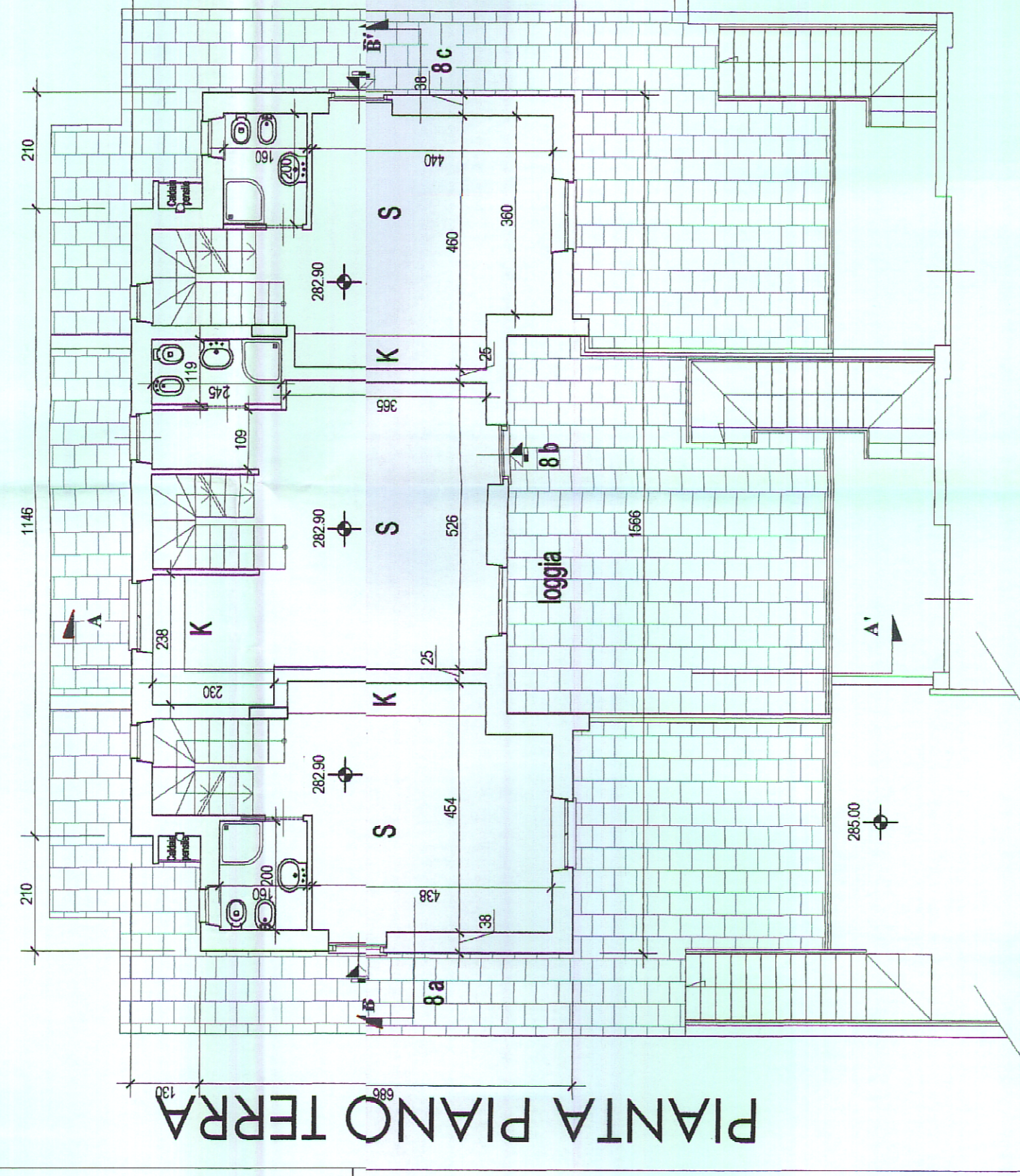
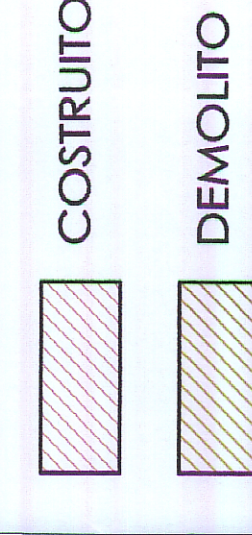
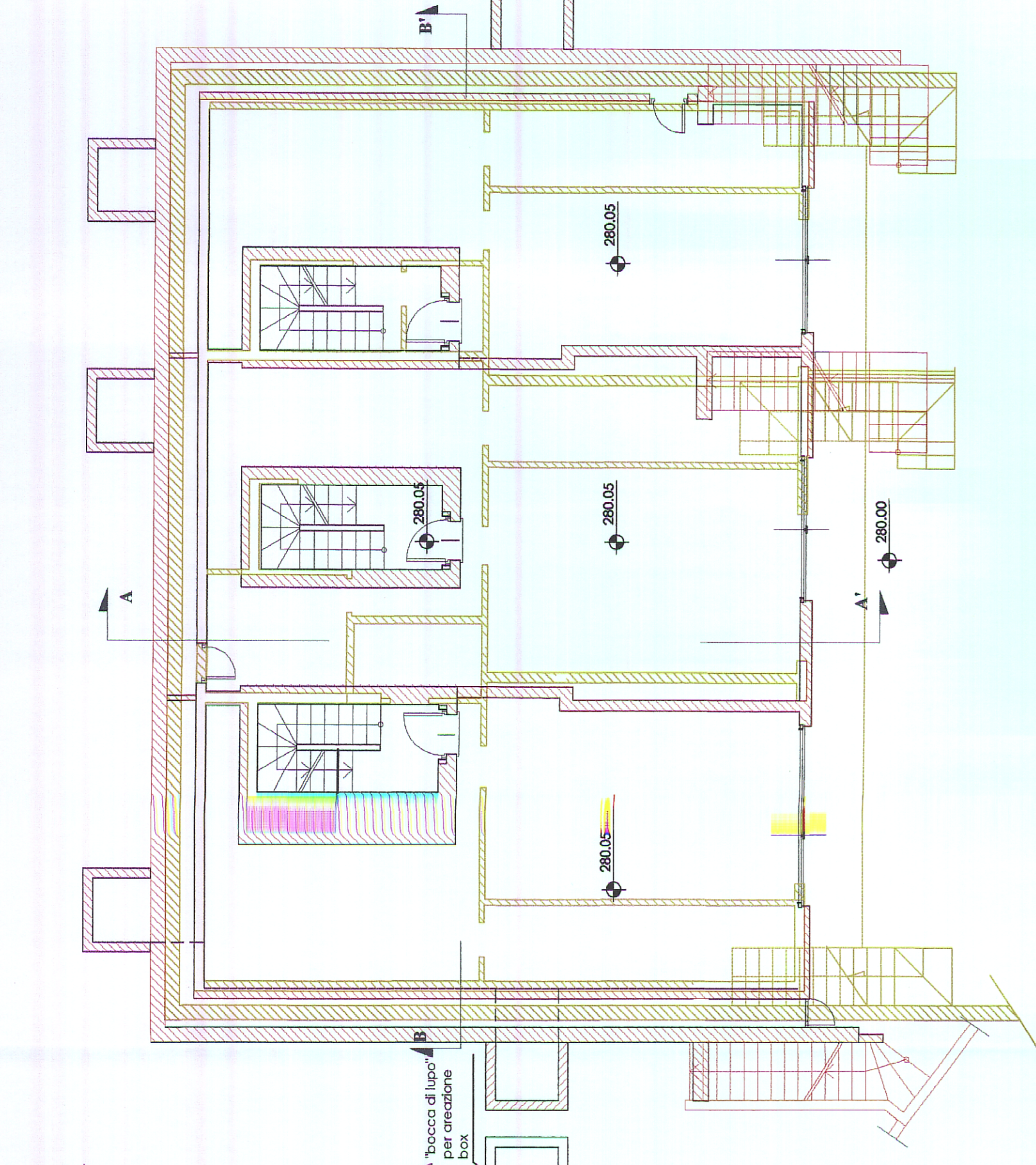
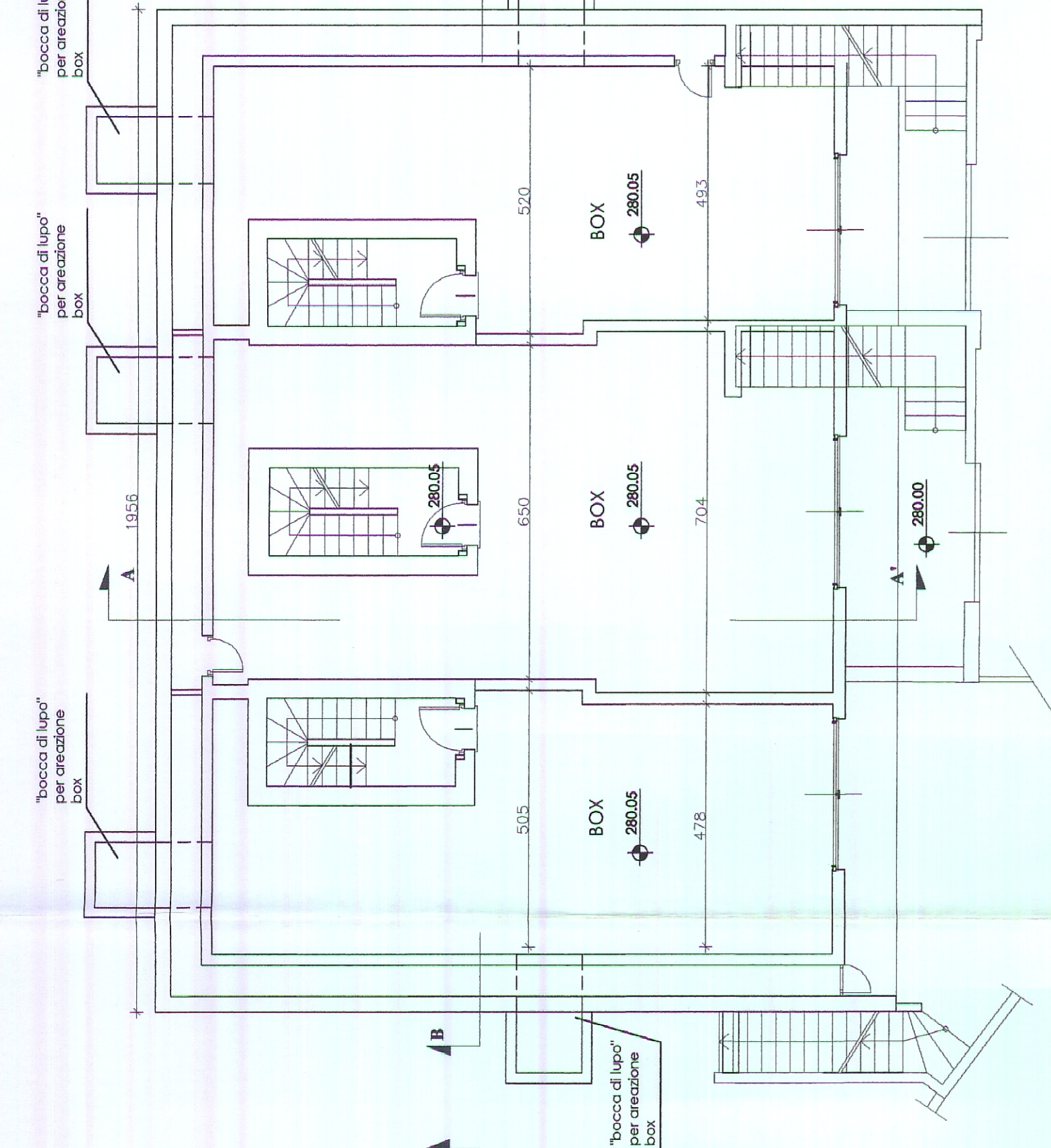
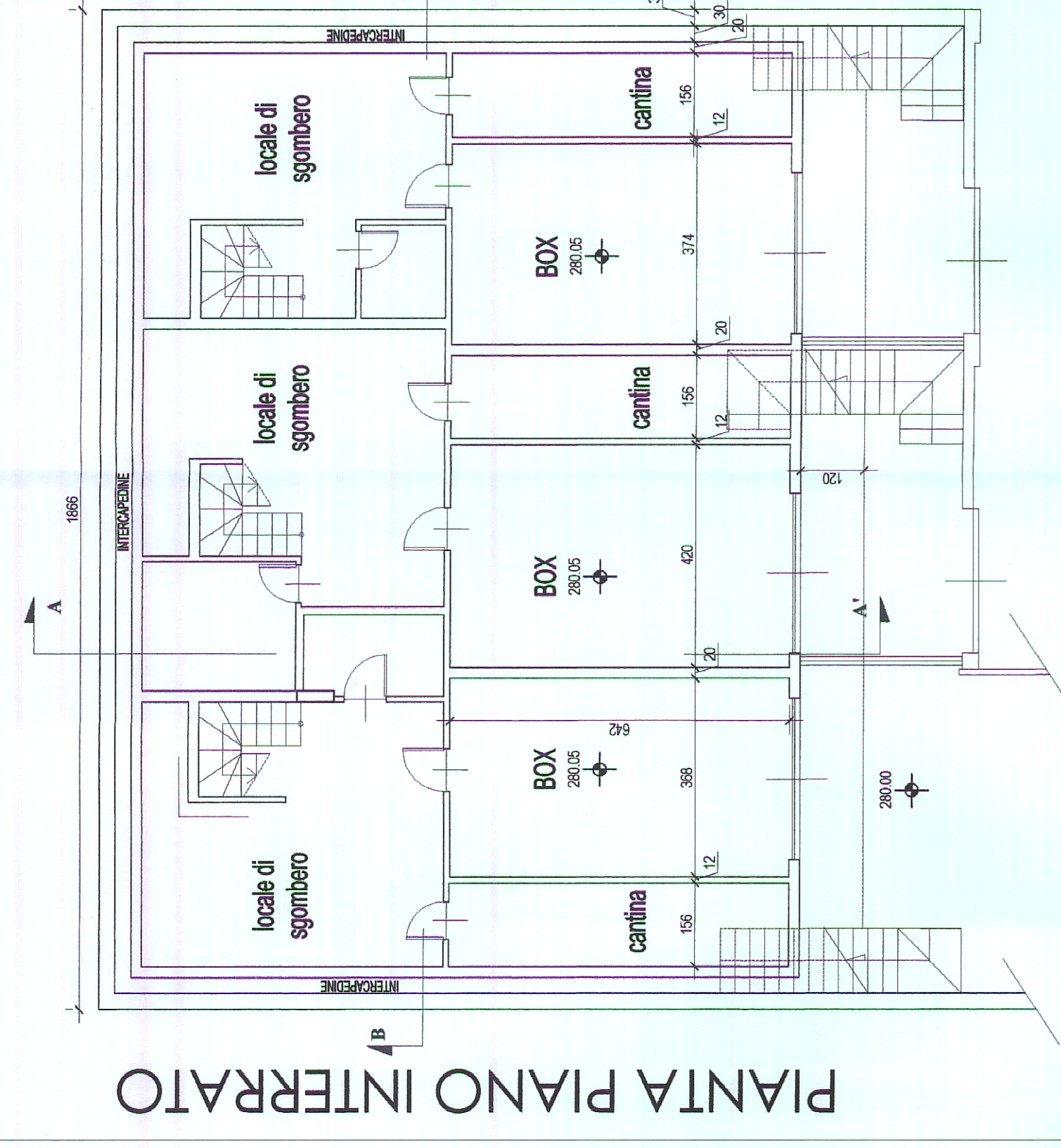
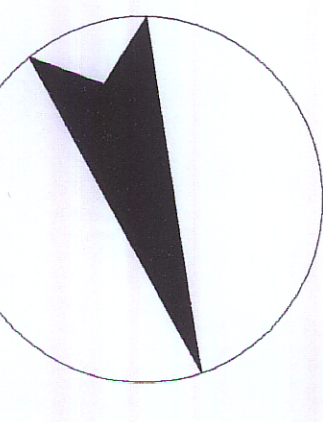


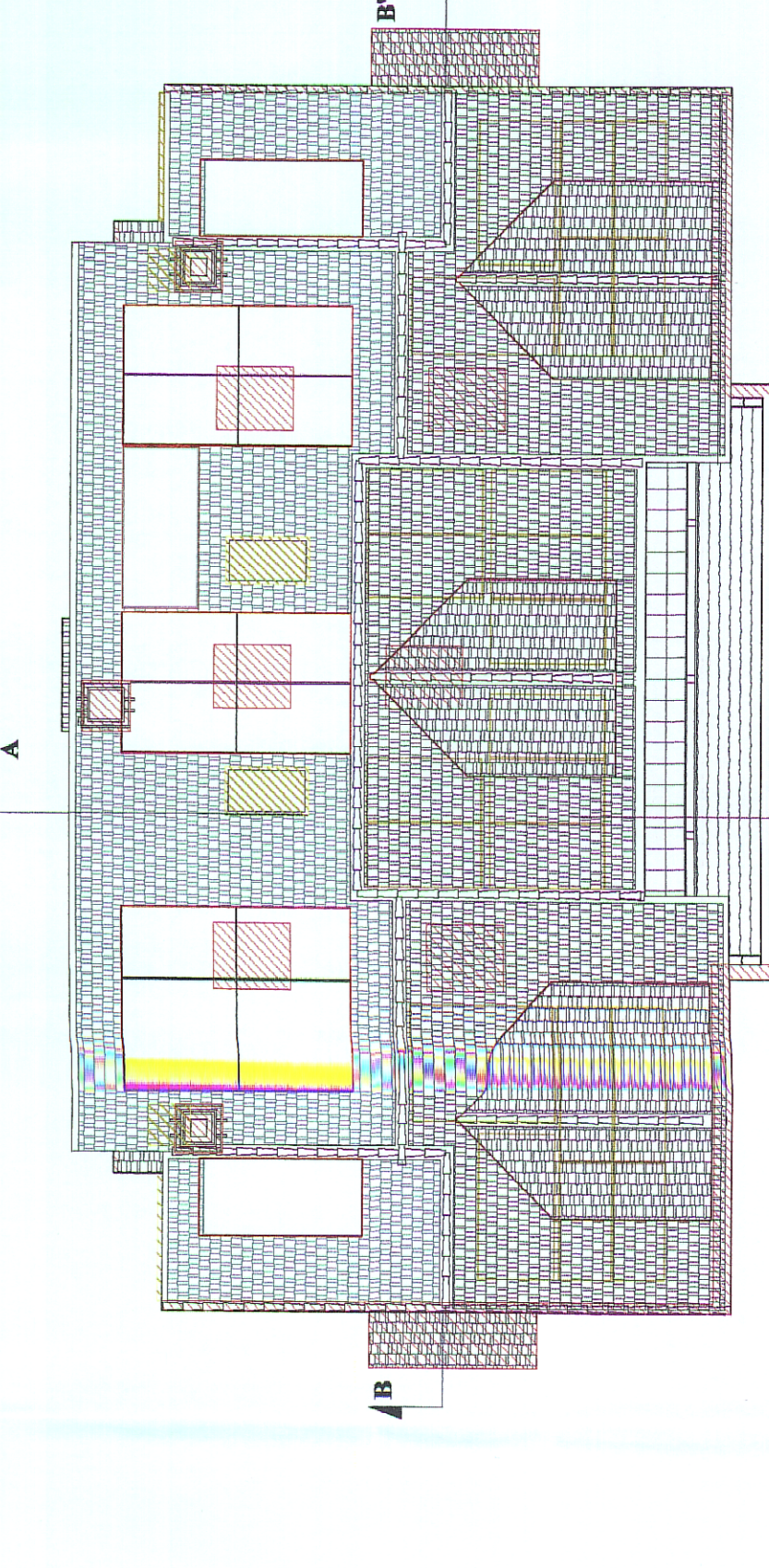
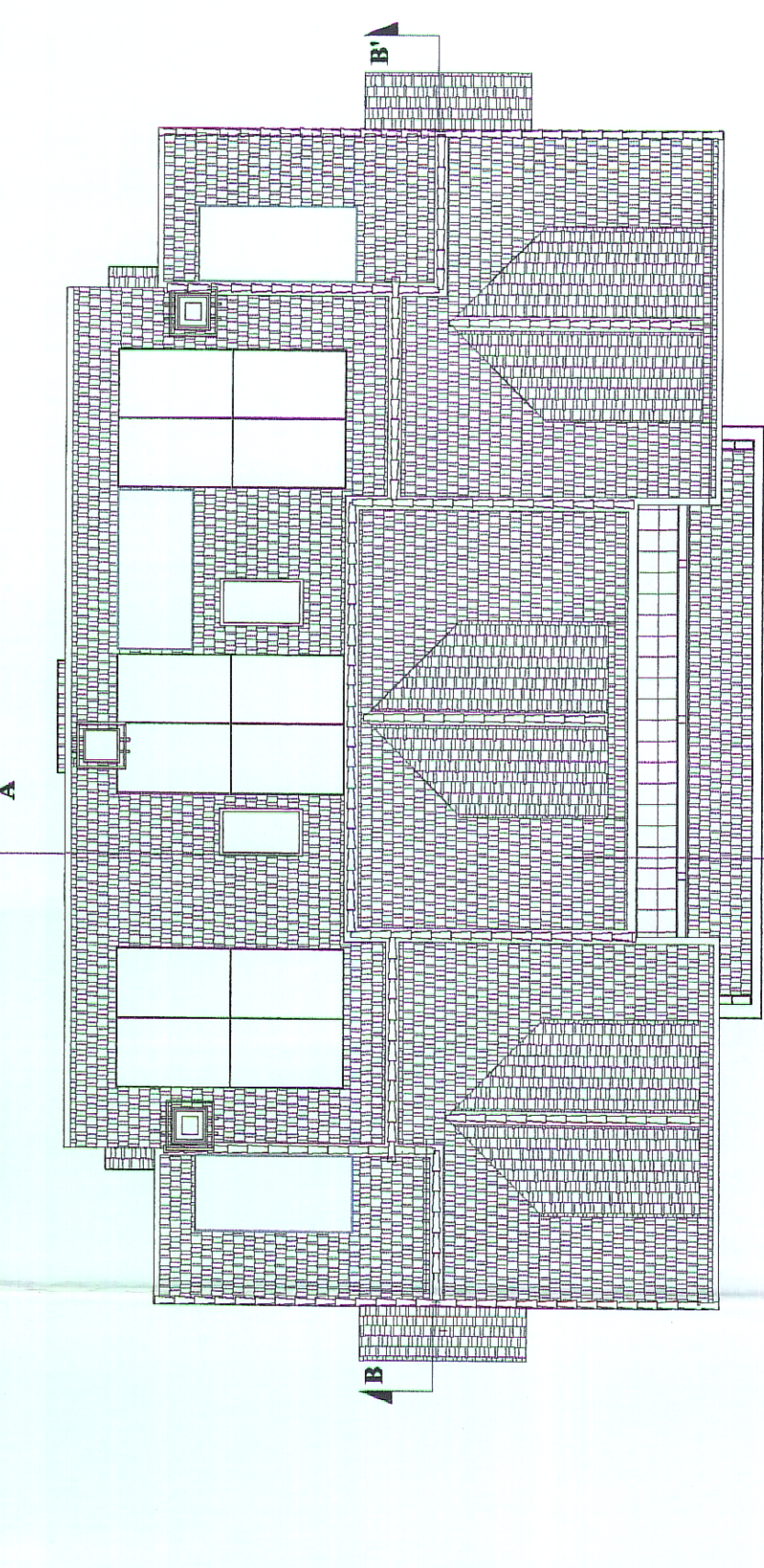
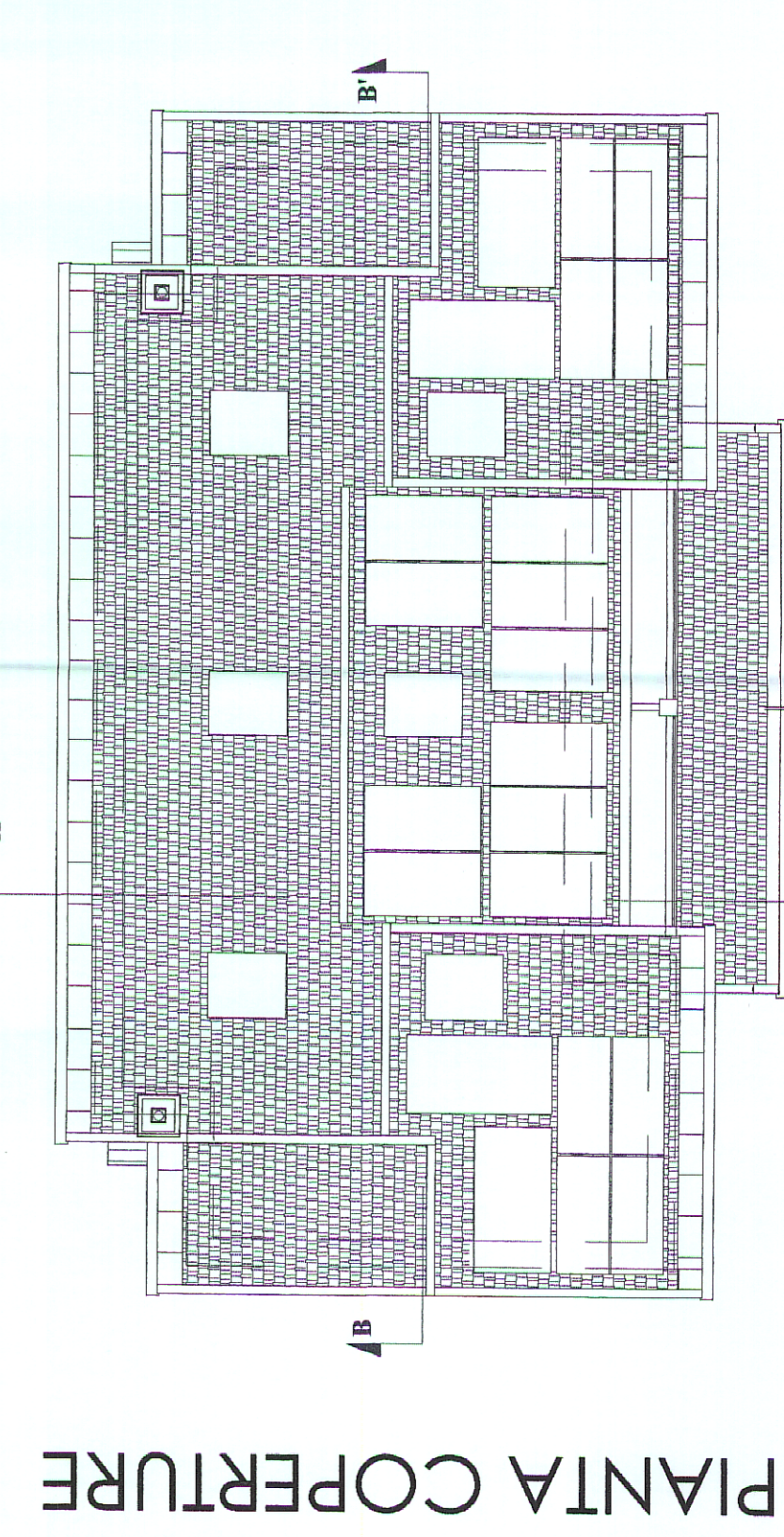
PROGETTO APPROVATO

VARIANTE

CONFRONTO



Si interviene la pianta del sottotetto approvato quale sezione della copertura a falda. Le murature interne, parete non presenti in sezione.



RICEDENTE:
PROVINCIA DI SAVONA
COMUNE DI STELLA-FRAZIONE S. MARTINO
LOCALITÀ BIGLINI DI TEGLIA

ABC s.r.l.
 VIA FESCHI 8/9
 16121 GENOVA

ABC s.r.l.
 VIA FESCHI 8/9
 P.I. 018241

VARIANTE IN CORSO D'OPERA
 AL PERMESSO DI COSTRUIRE LOTTI 8-9-12

LOTO 12 - PIANTE
 PROGETTO APPROVATO - VARIANTE - CONFRONTO

PROGETTISTA:
 ING. MARCO GEMELLI

STUDIO DI ARCHITETTURA ED INGENERIA **gnudi**
 VIA S. PIETRO 15
 16022 GENOVA

2.1
 P.I. 018241

COMUNE DI STELLA
 P.I. 018241
 26 SET 2012