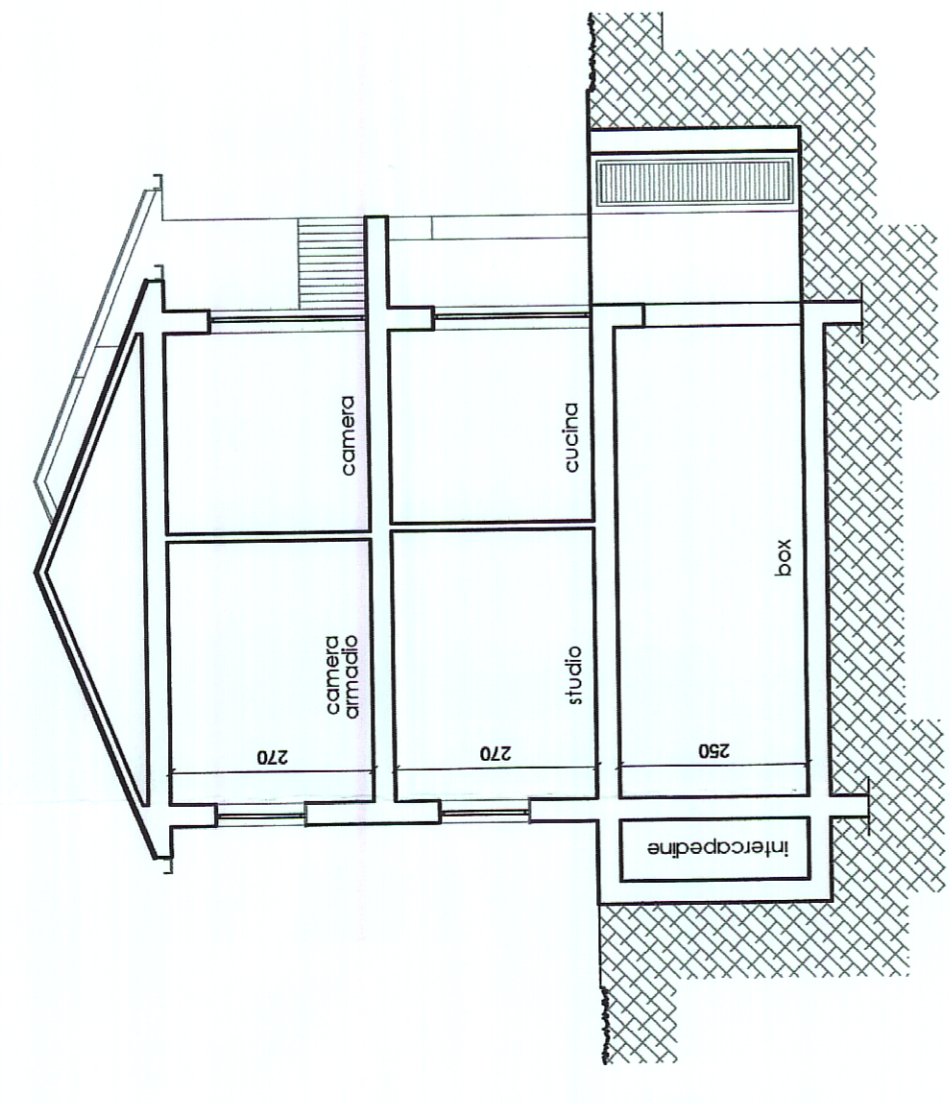
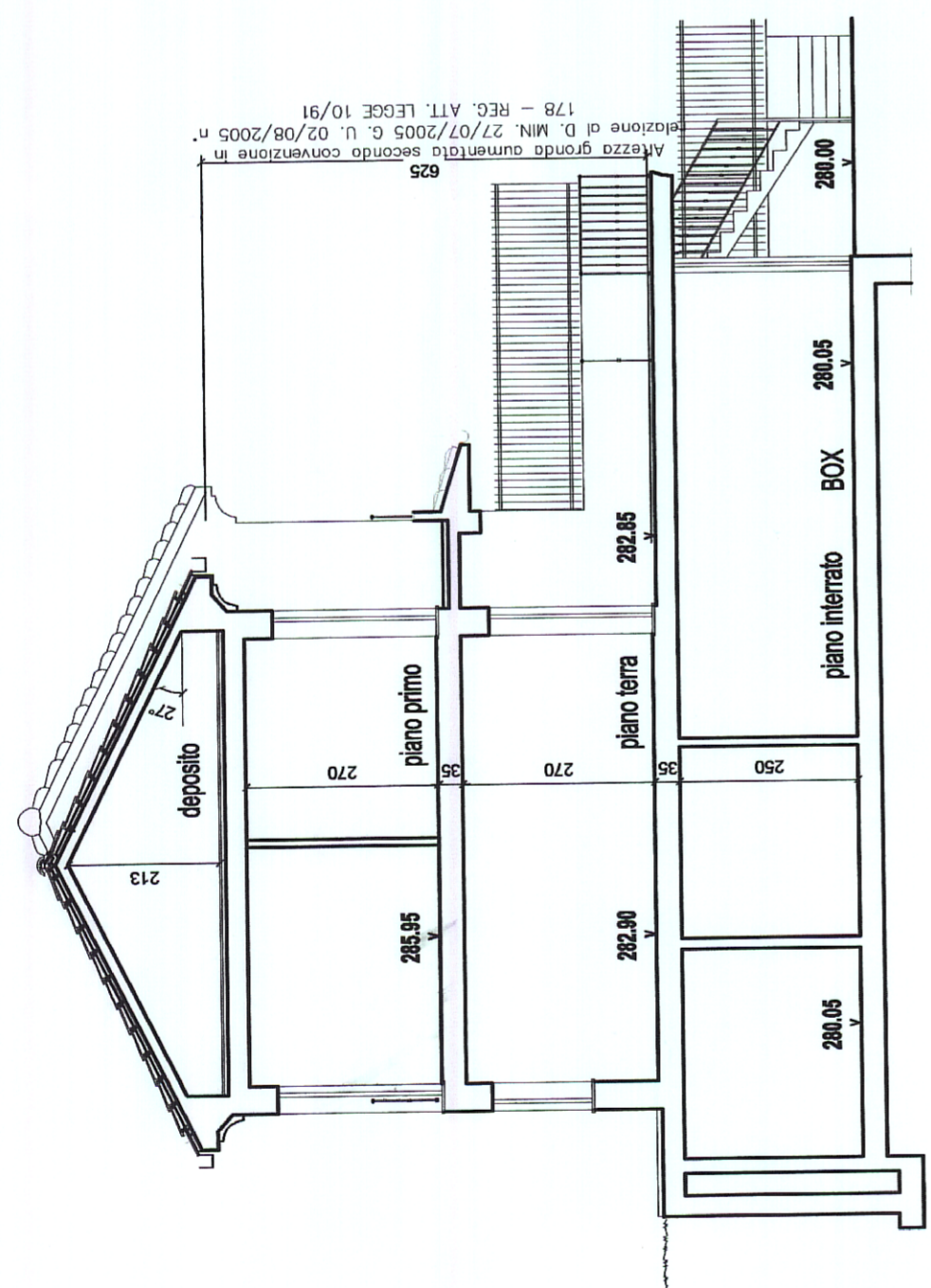


STRALCIO TAV.19 S.U.A.

SEZIONE TRASVERSALE A-A'

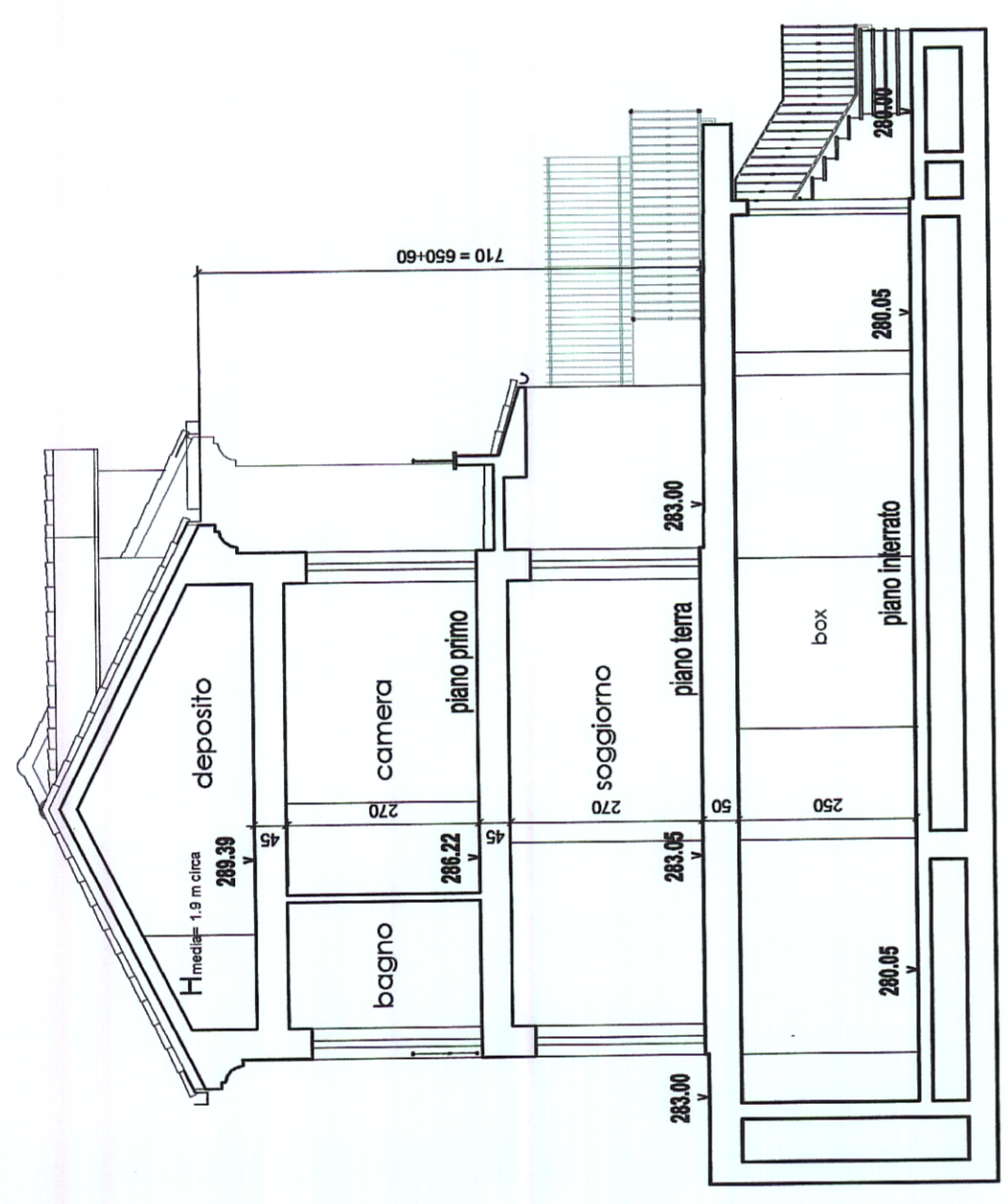


PROGETTO APPROVATO

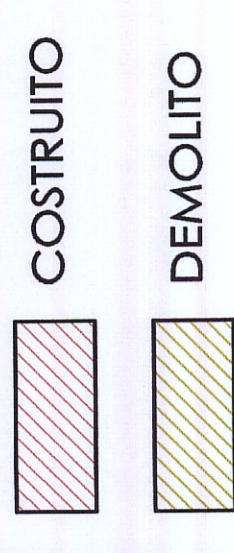
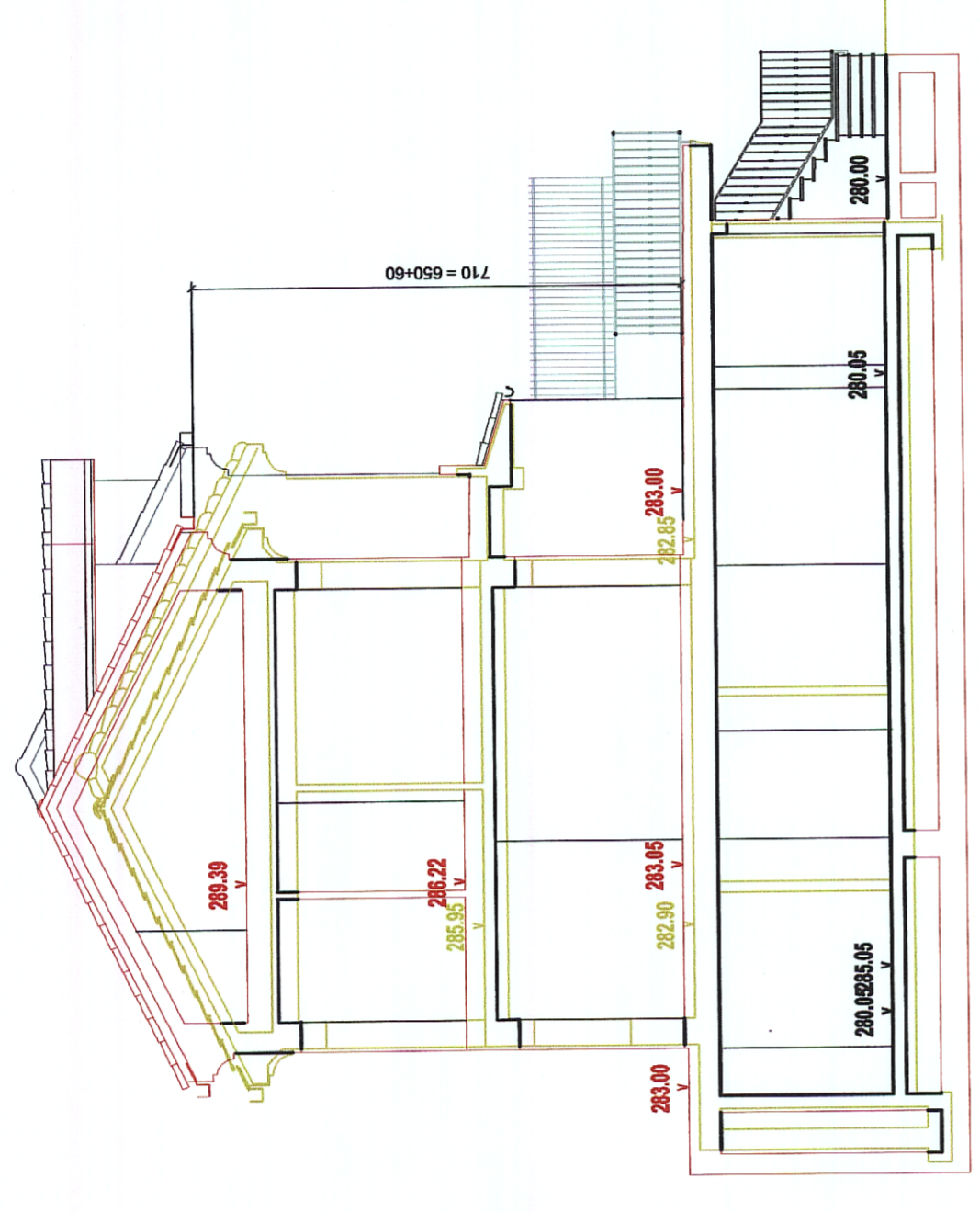


Mappa di riferimento: Accordo contrattoriale n. 178 - REG. ATT. LEGGE 10/91  
 Circolare di D. MIN. 27/07/2005 G. U. 02/08/2005 n. 625

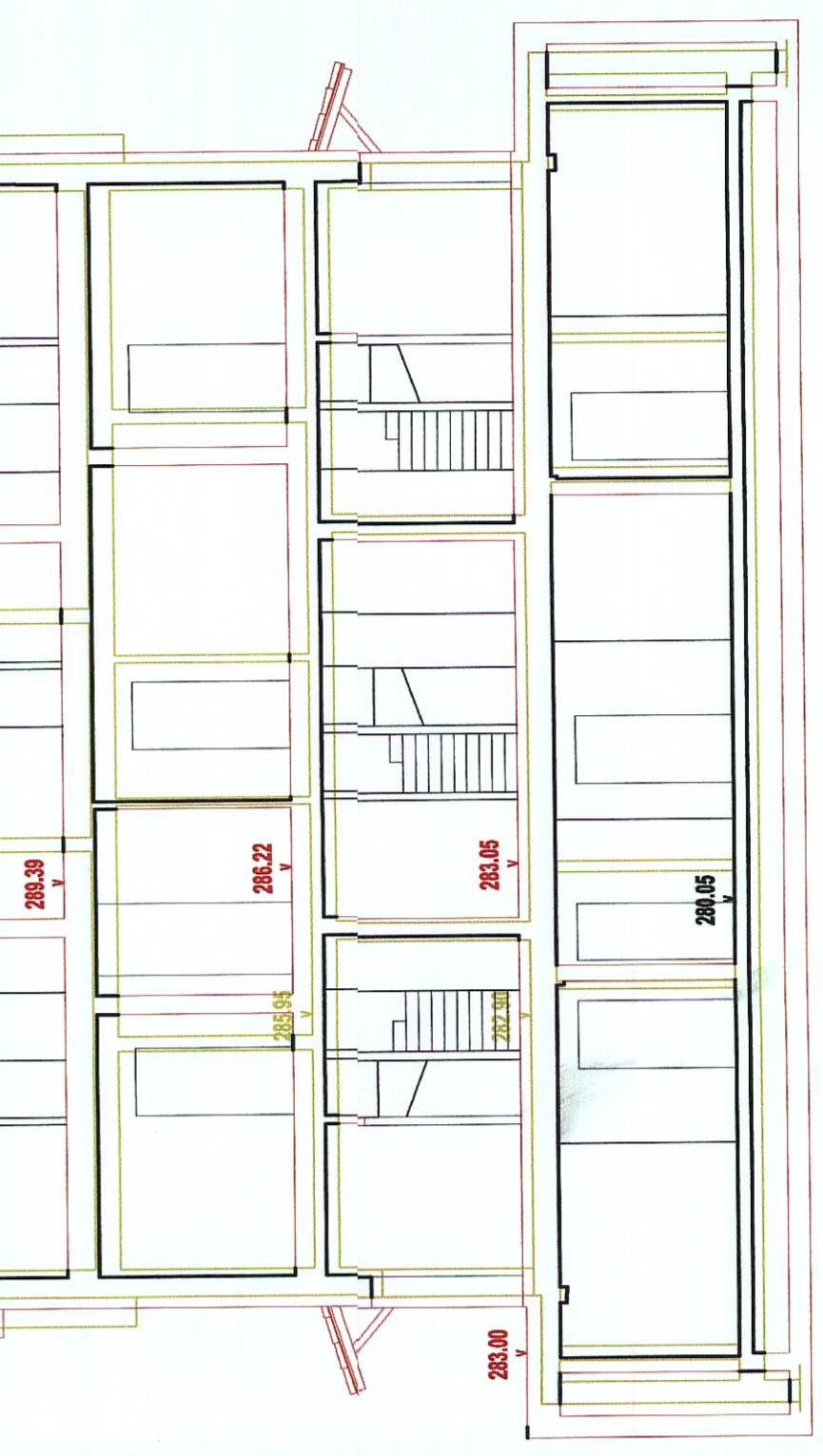
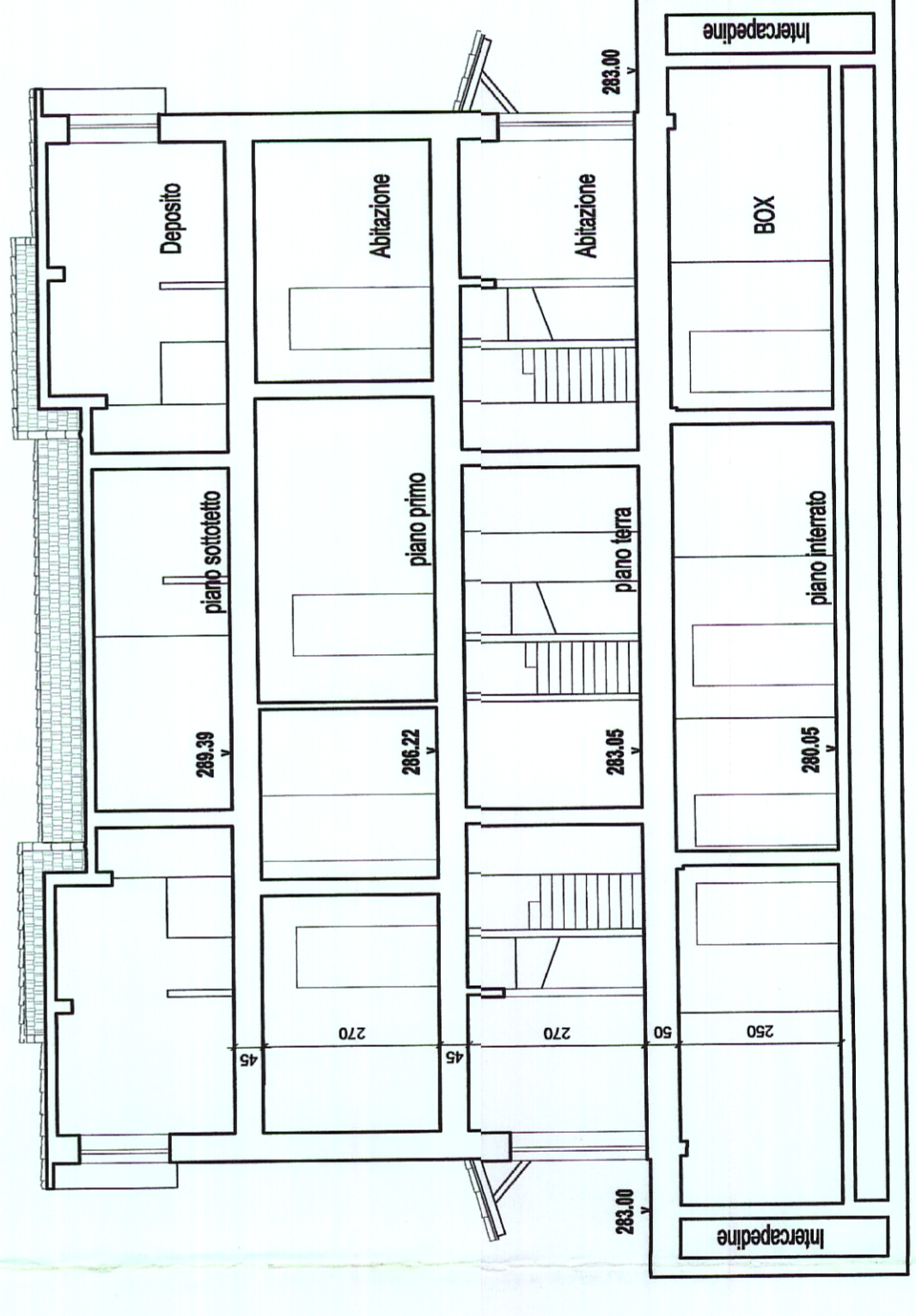
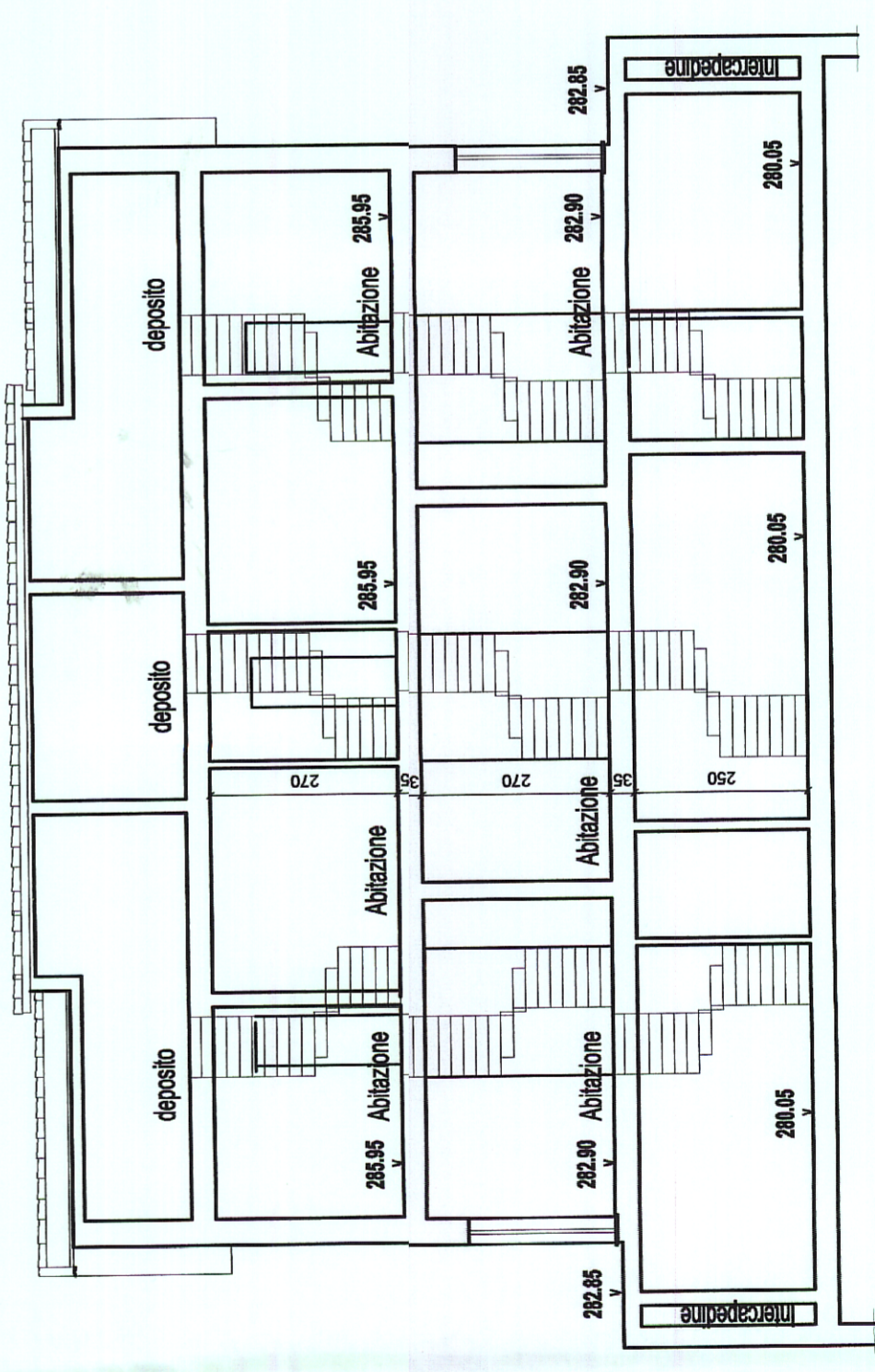
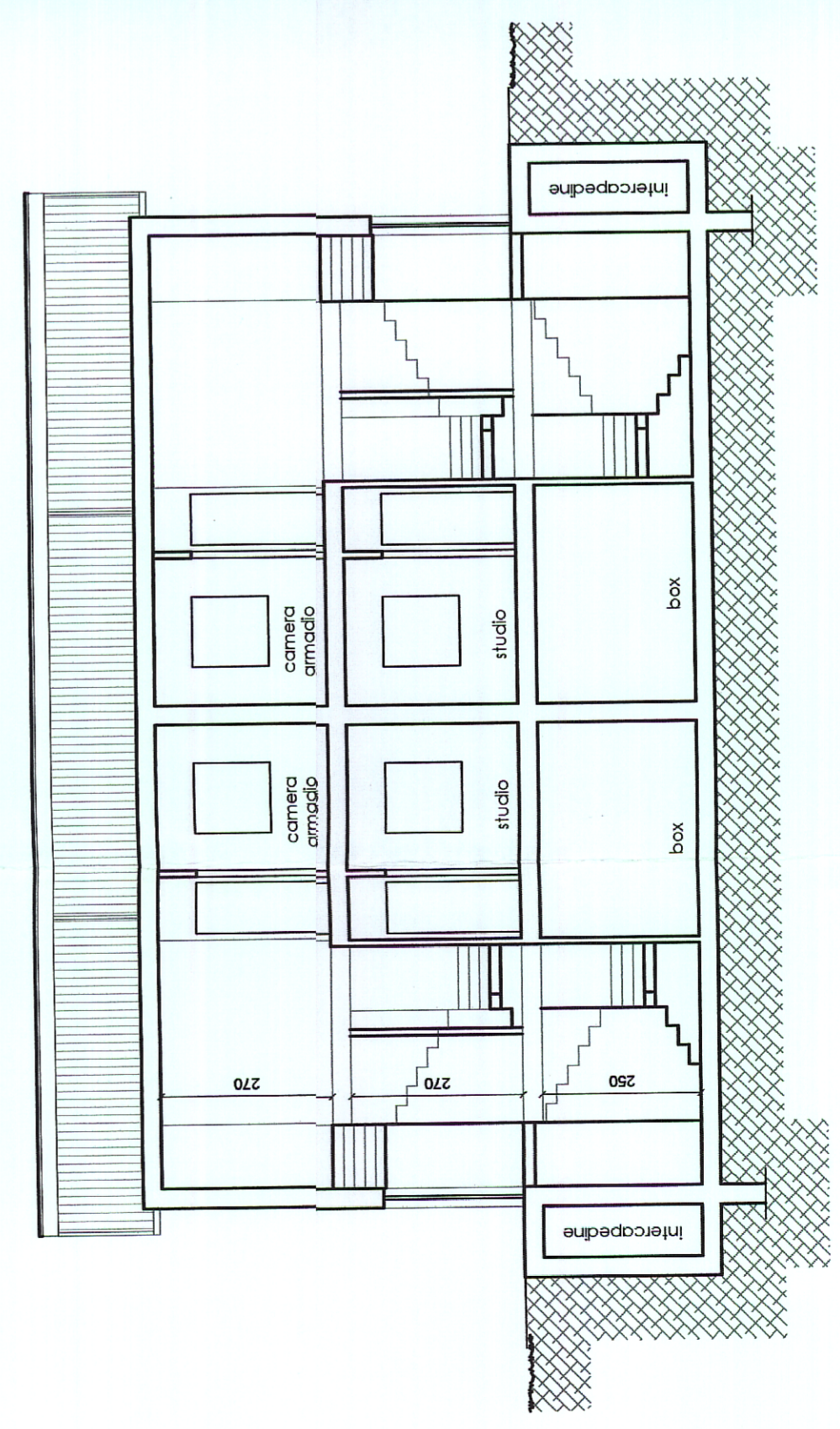
VARIANTE



CONFRONTO



SEZIONE LONGITUDINALE B-B'



PROVINCIA DI SAVONA  
 COMUNE DI STELLA-FRAZIONE S.MARTINO  
 LOCALITA' BIGLINI DI TEGLIA

RICEDENTE:  
**ABC S.r.l.**  
 VIA FIESCHI 8/9  
 16121 GENOVA  
 P.I.: 01424930968

VARIANTE IN CORSO D'OPERA  
 AL PERMESSO DI COSTRUIRE LOTTI 8-9-12

TITOLO:  
 LOTTO 12 - SEZIONI  
 PROGETTO APPROVATO - VARIANTE - CONFRONTO

SCALA 1:100

Studio di Architettura ed Ingegneria **gnudi**  
 ING. MAURIZIO GNUDI  
 Via S. Maria 24, 40136 Bologna, Italia  
 Tel. +39 051 2631111  
 Fax +39 051 2631112  
 gnudi@gnudi.it

22

COMUNE DI STELLA  
 26 SET. 2012  
 Resp. Il.