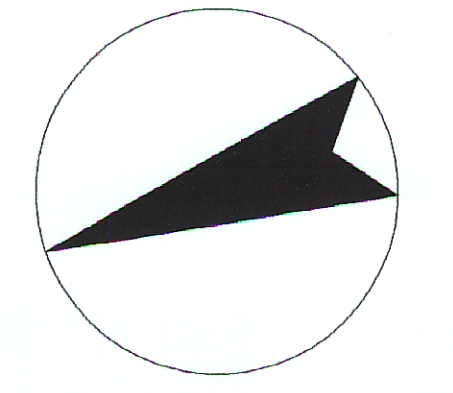
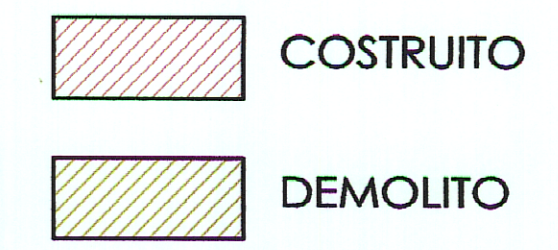
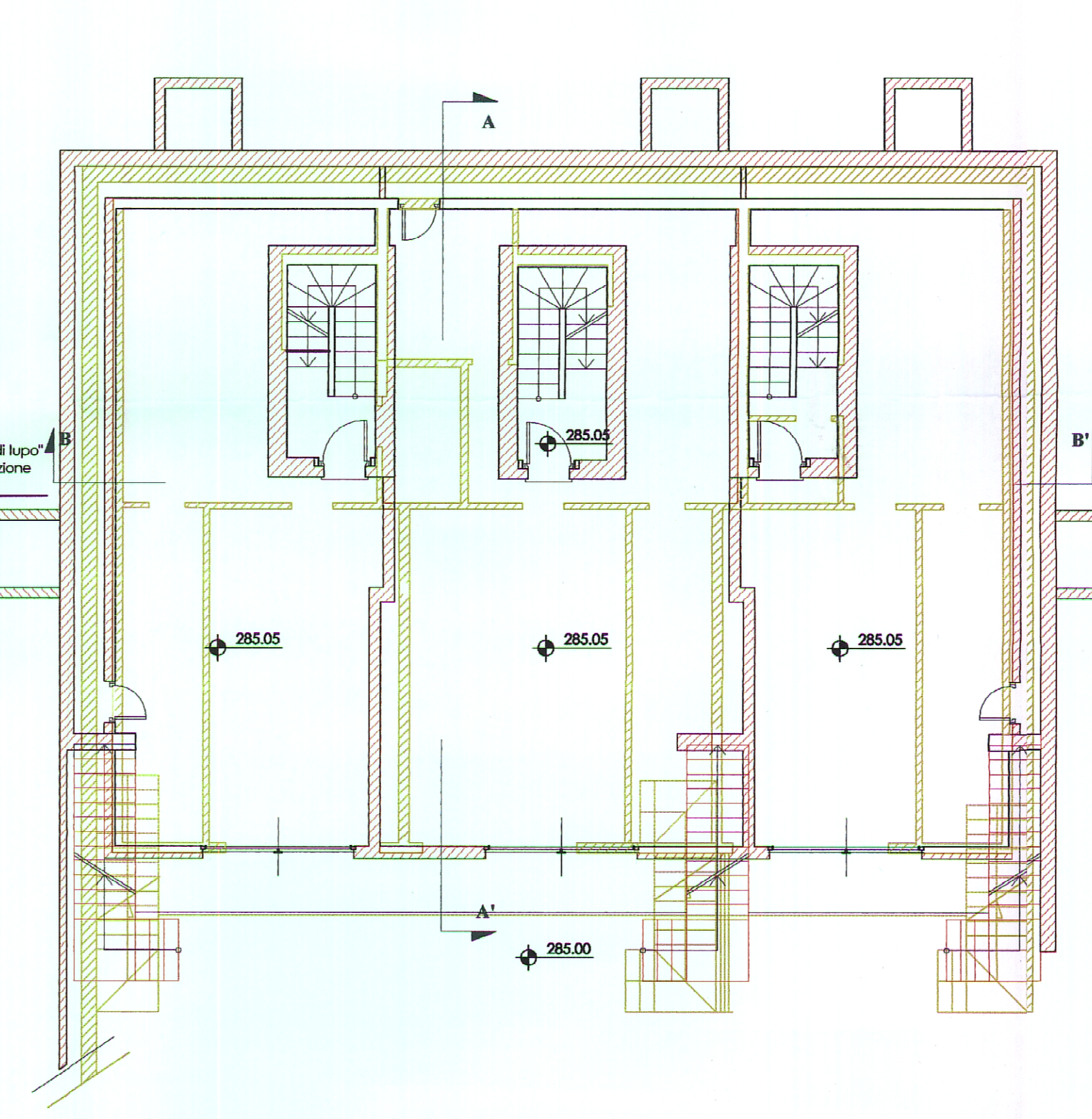
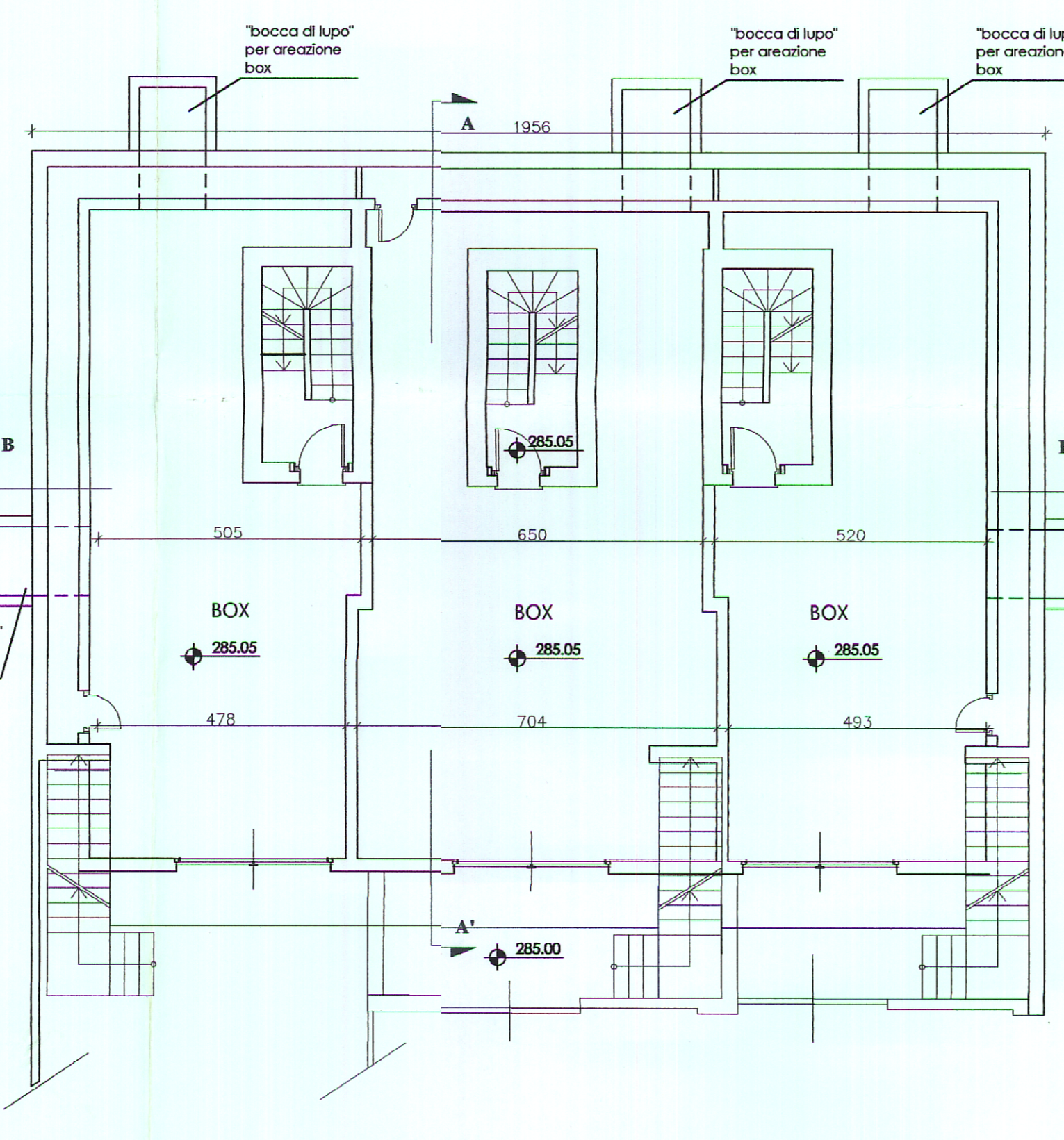
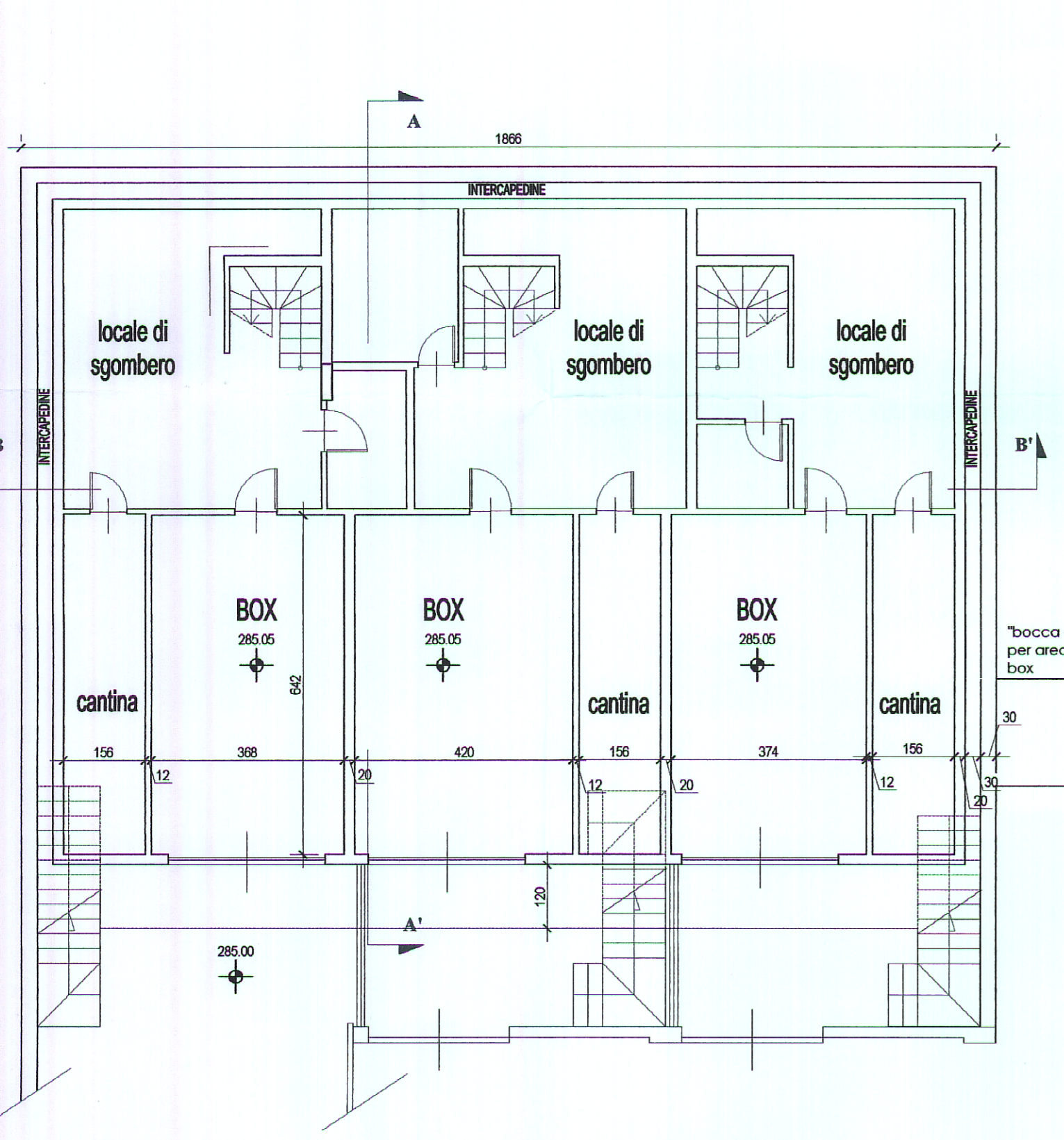


PROGETTO APPROVATO

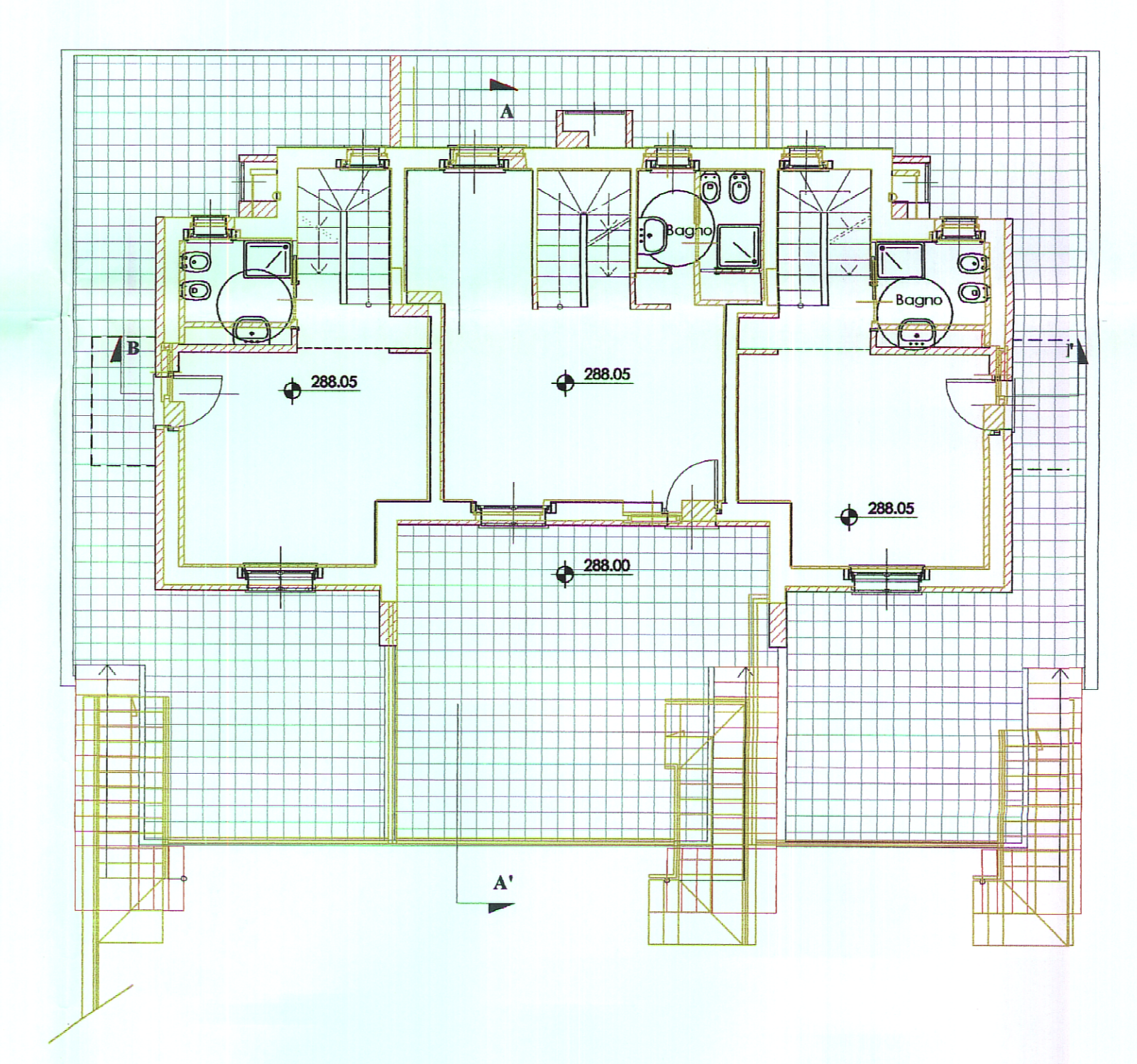
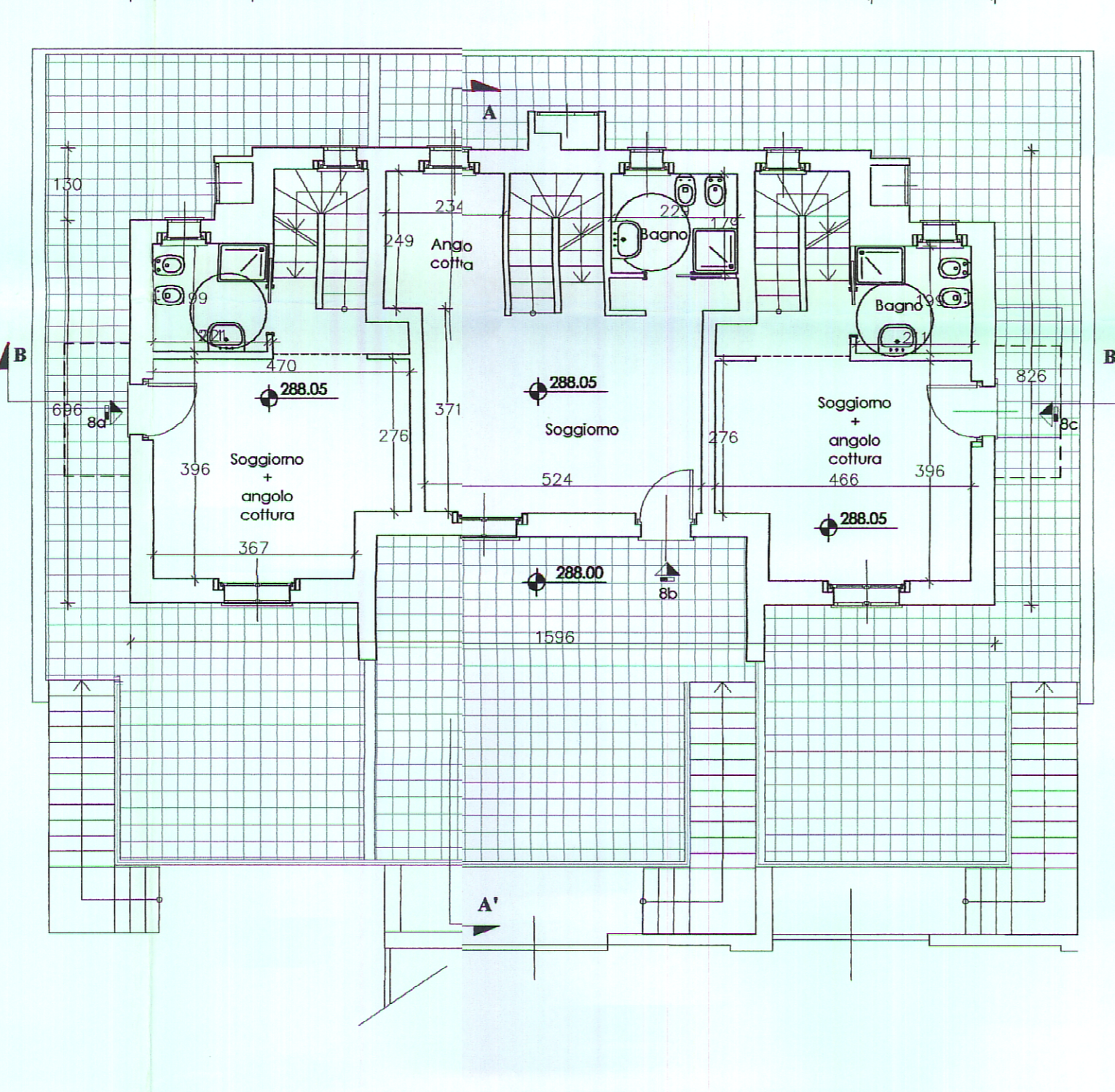
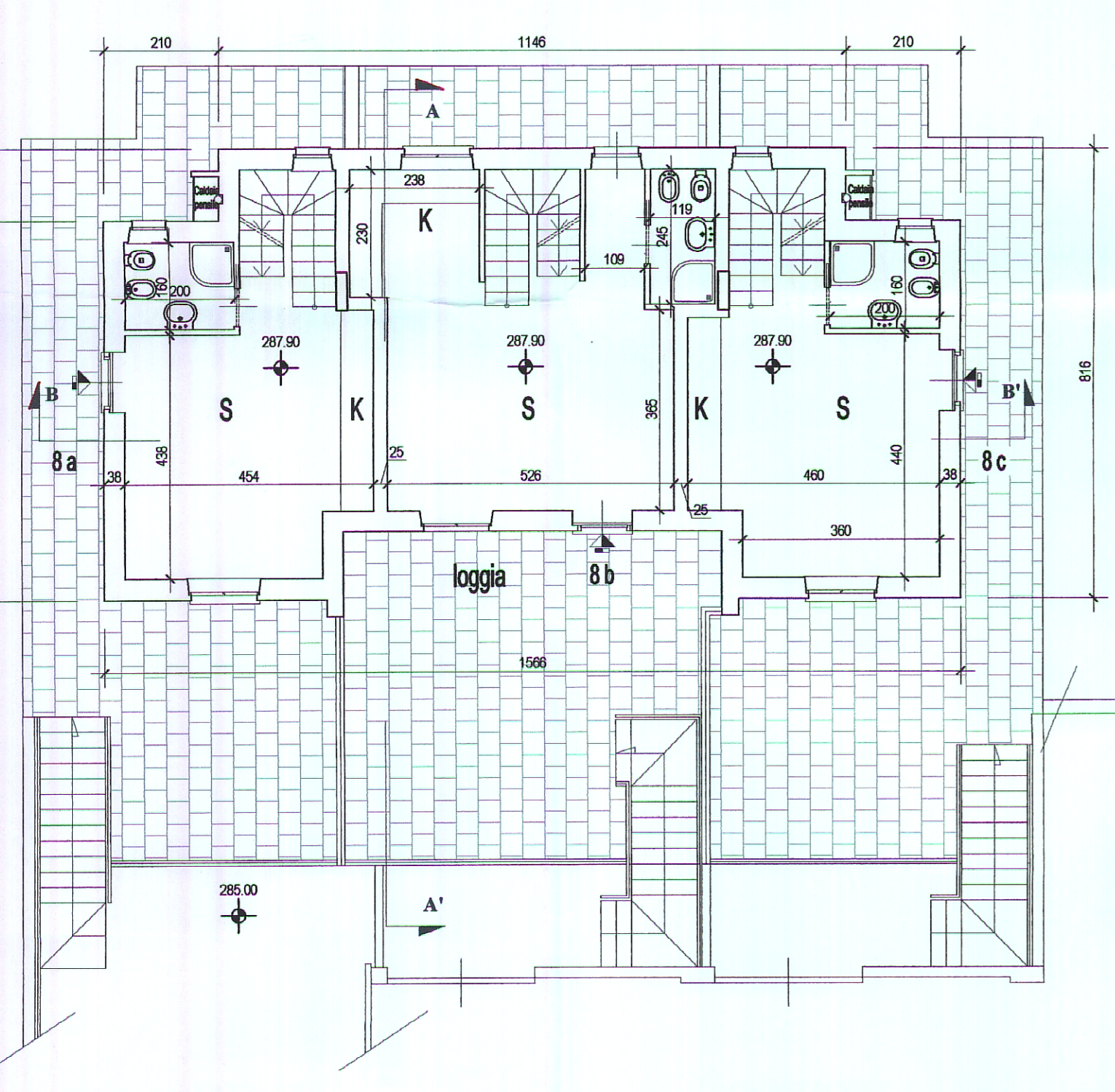
VARIANTE

CONFRONTO

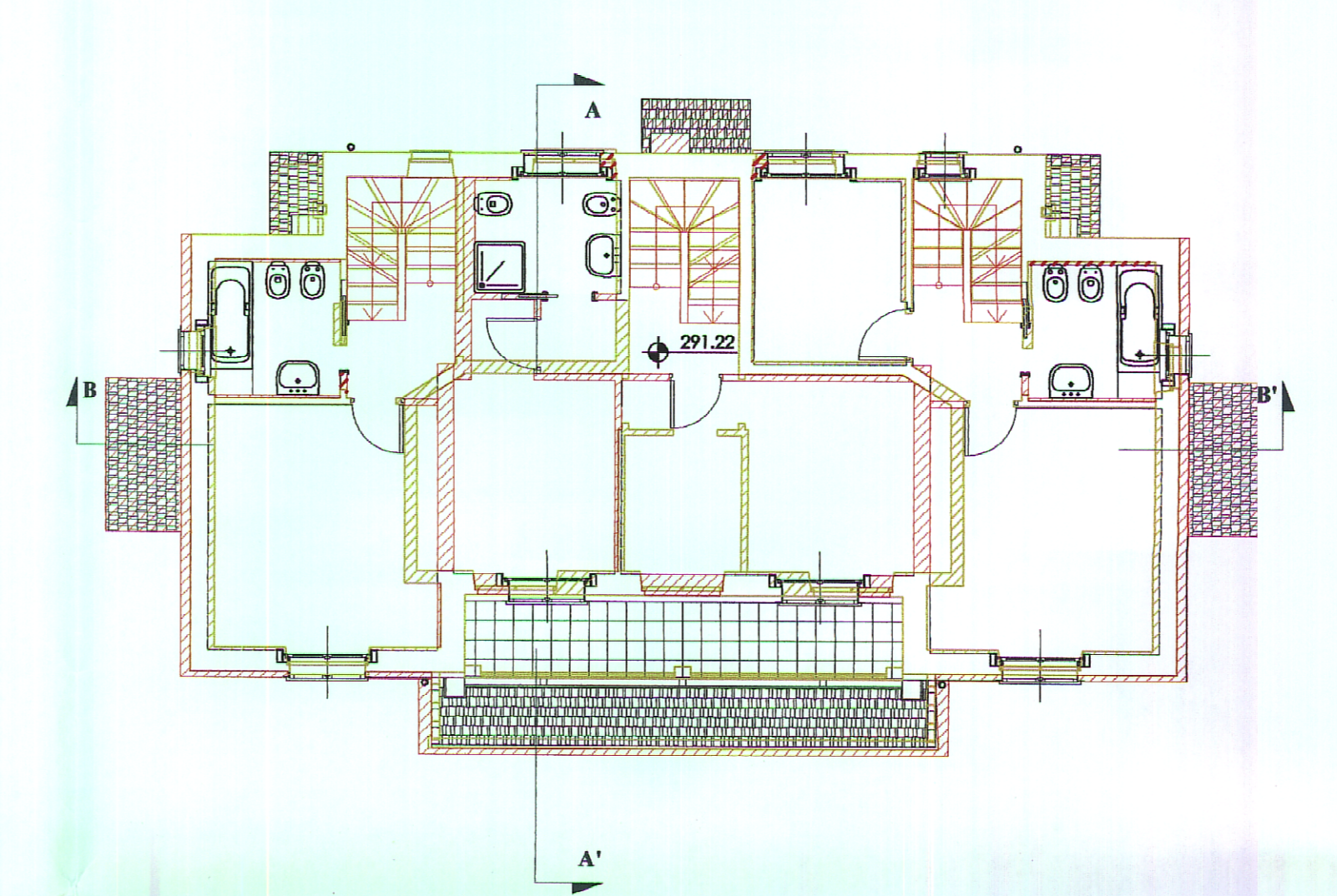
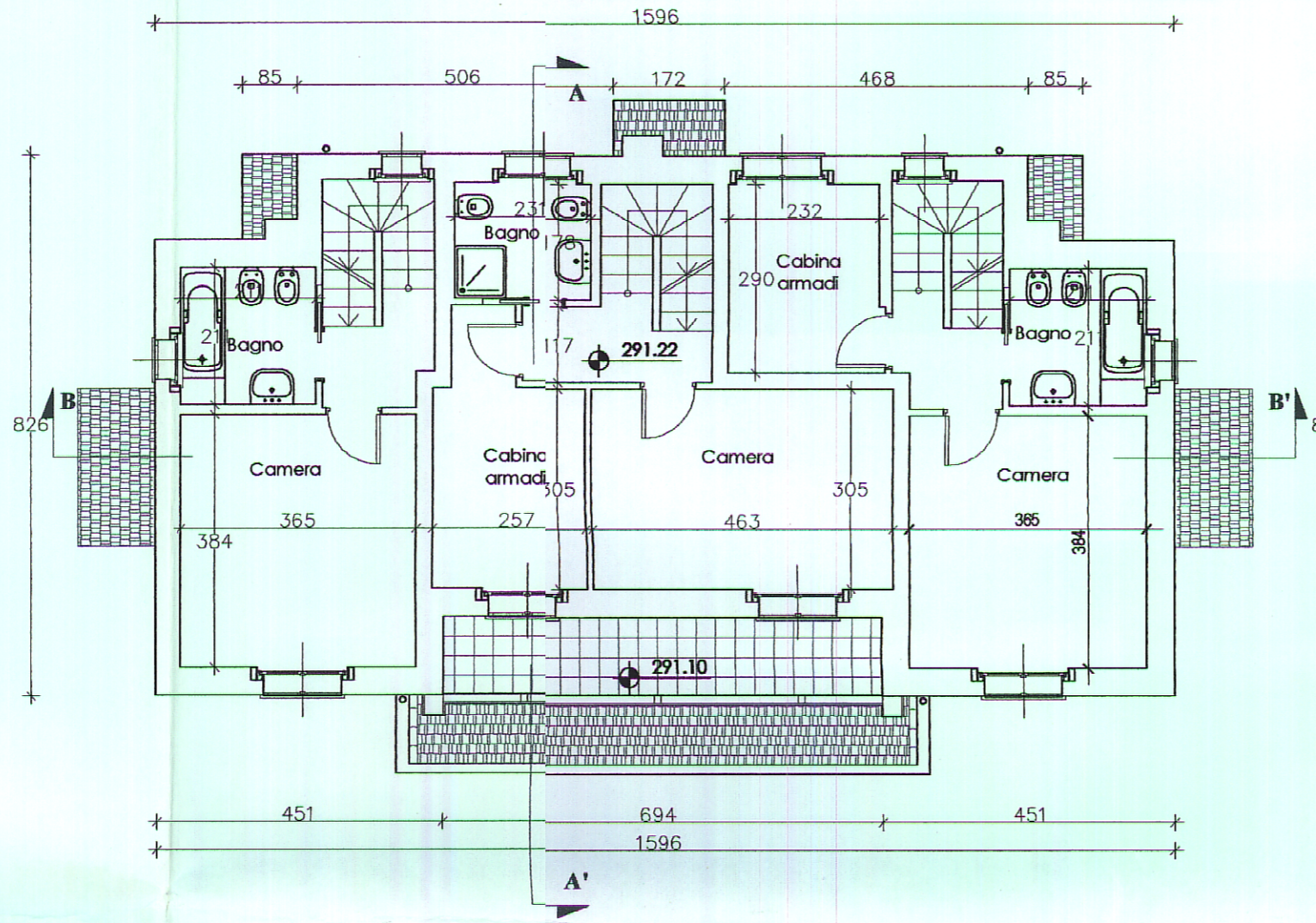
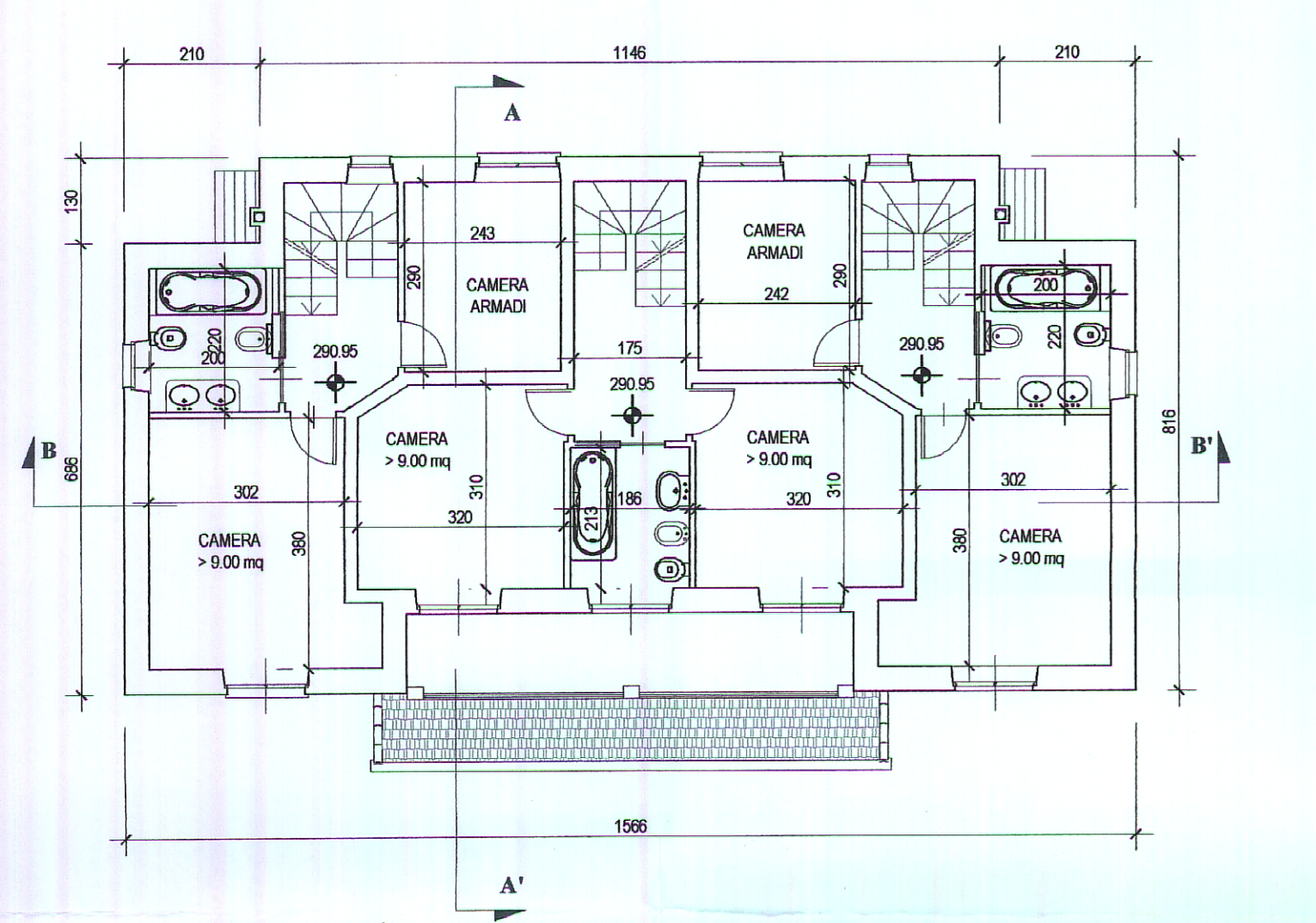
PIANTA PIANO INTERRATO



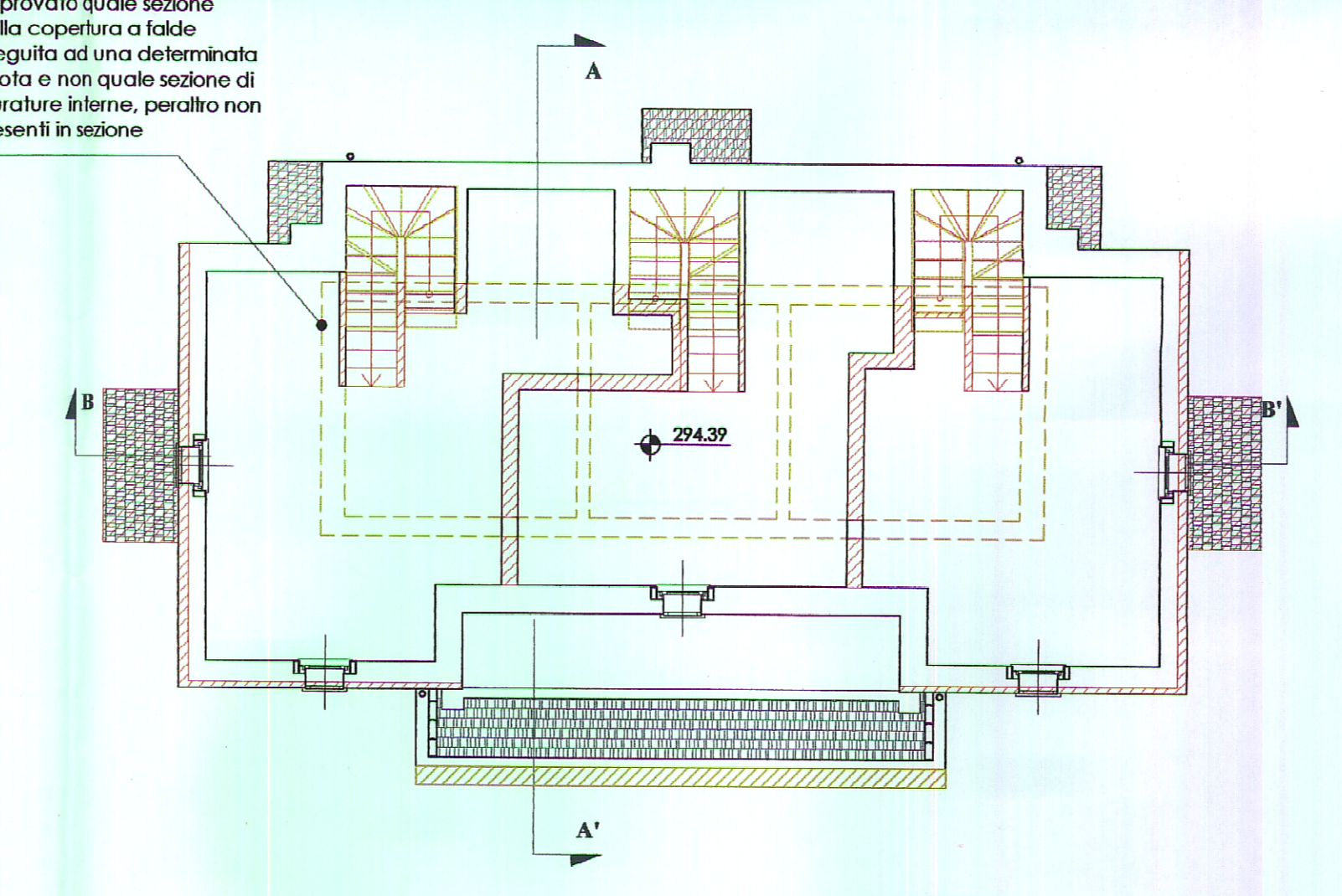
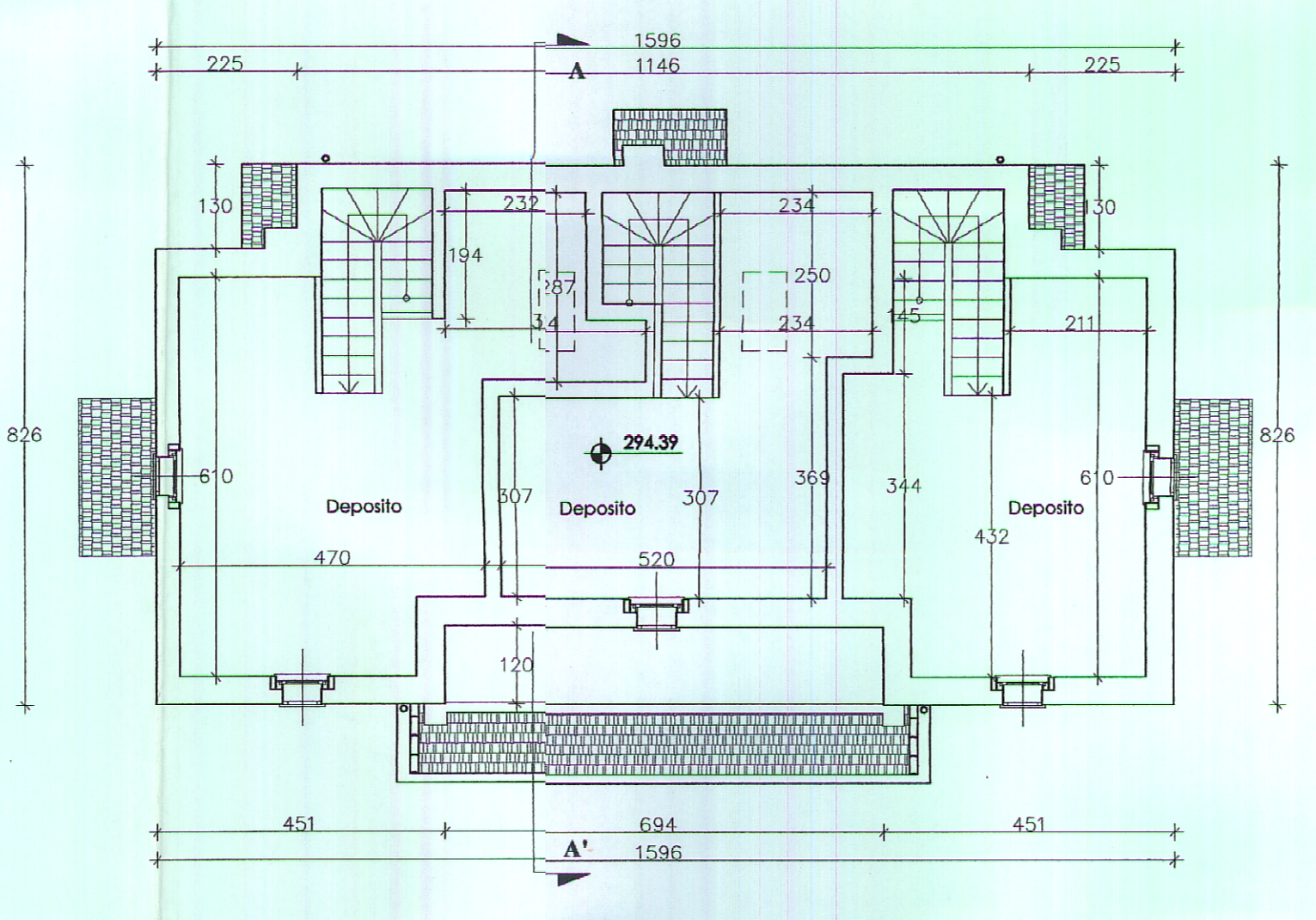
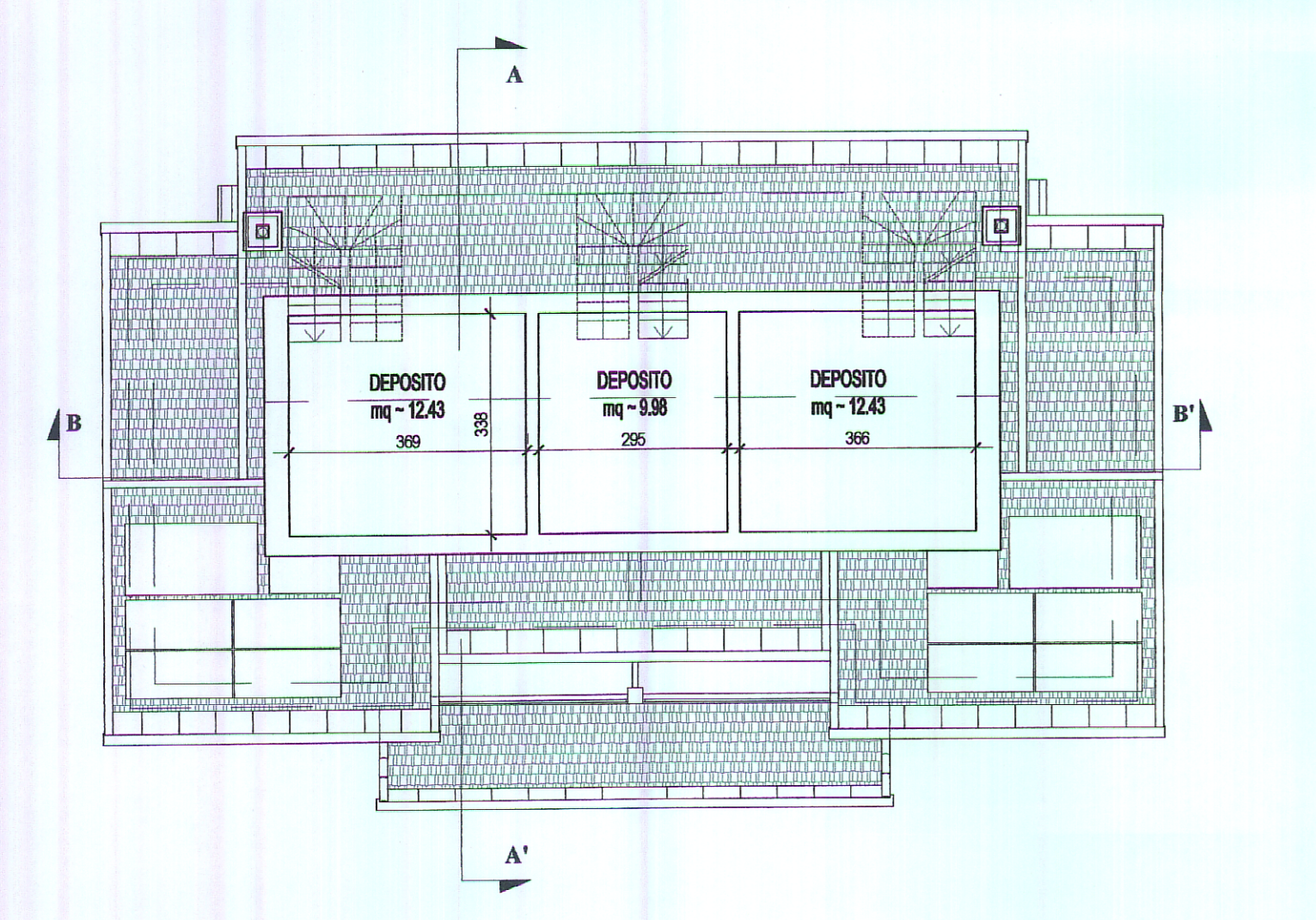
PIANTA PIANO TERRA



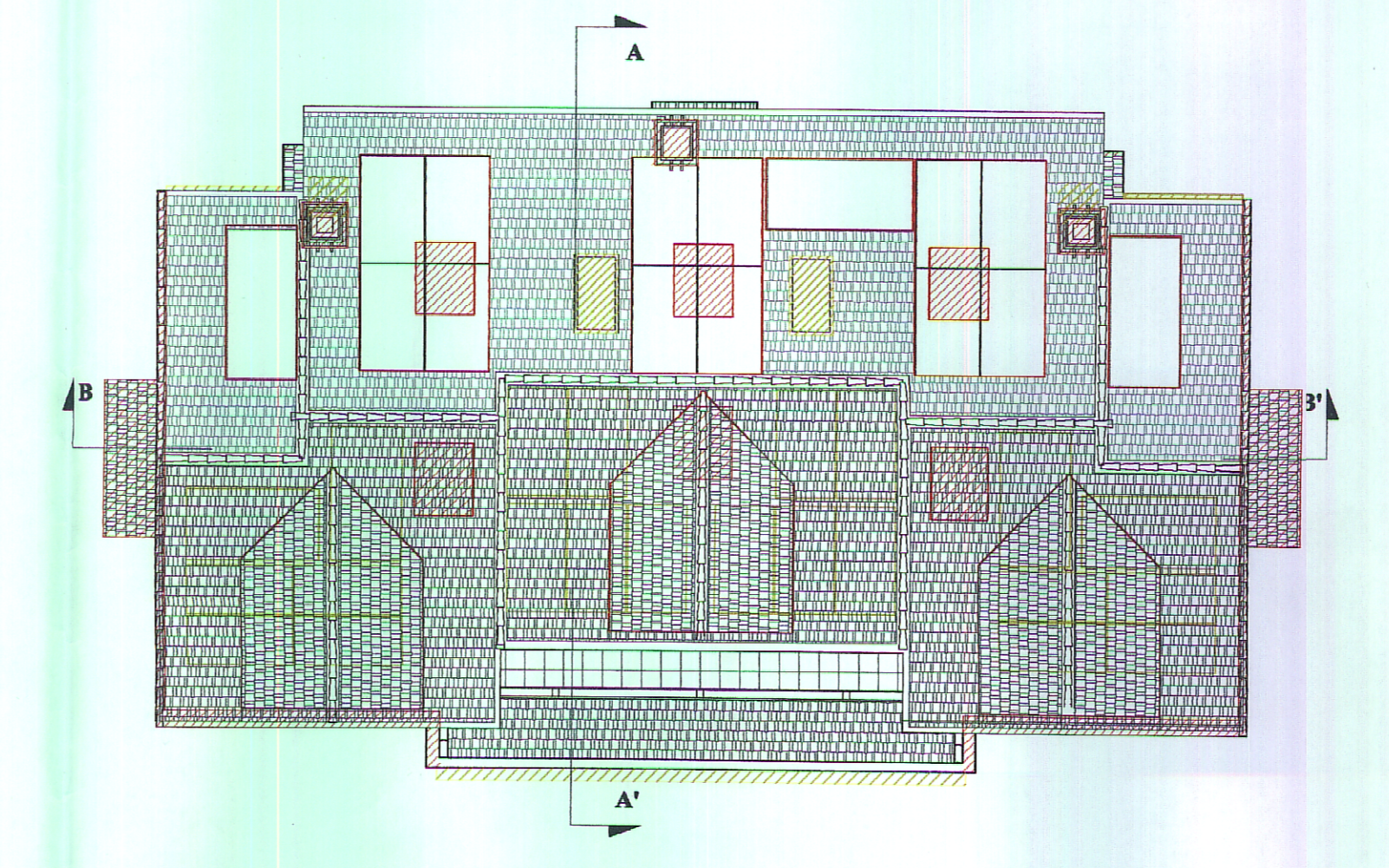
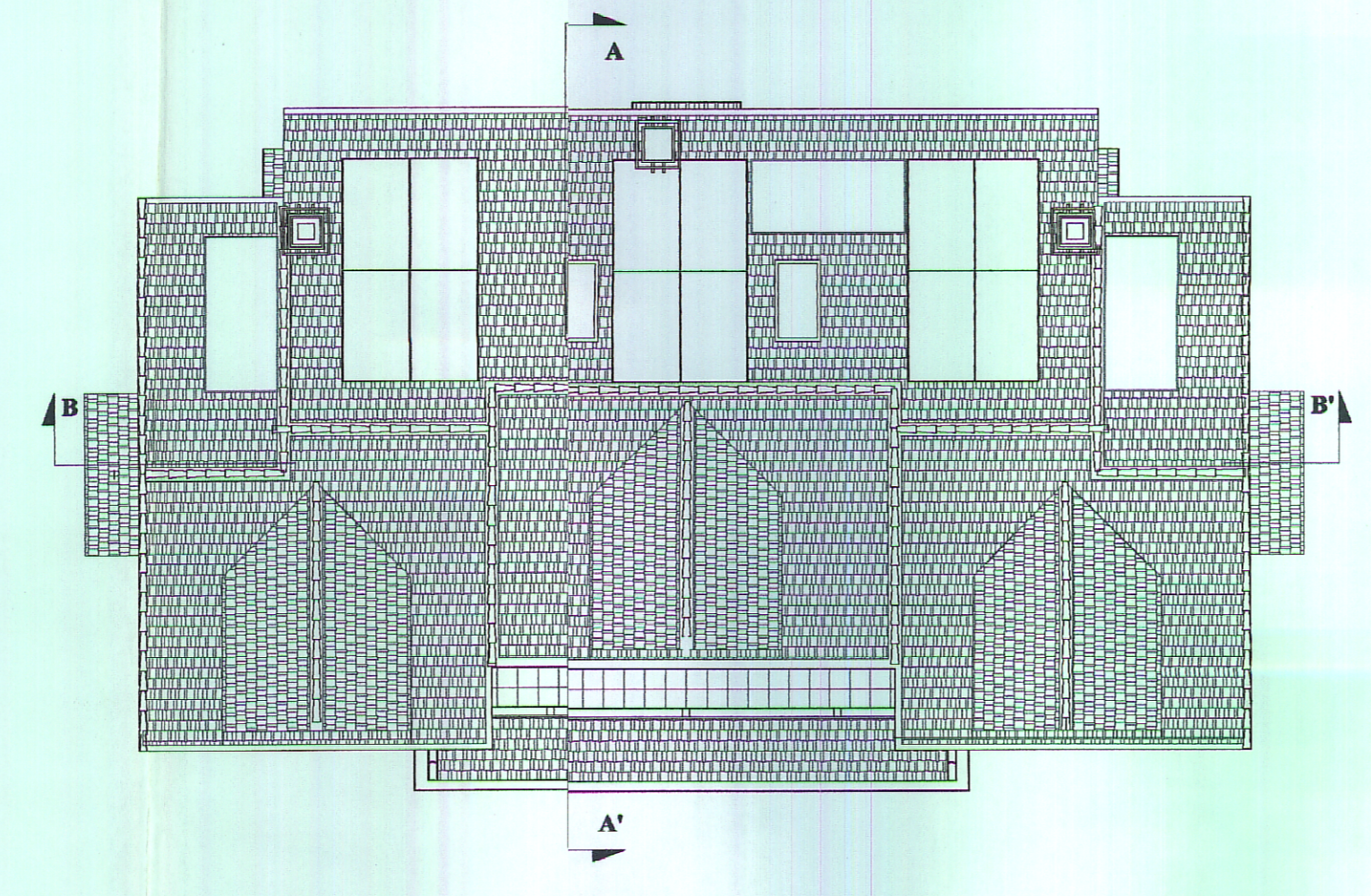
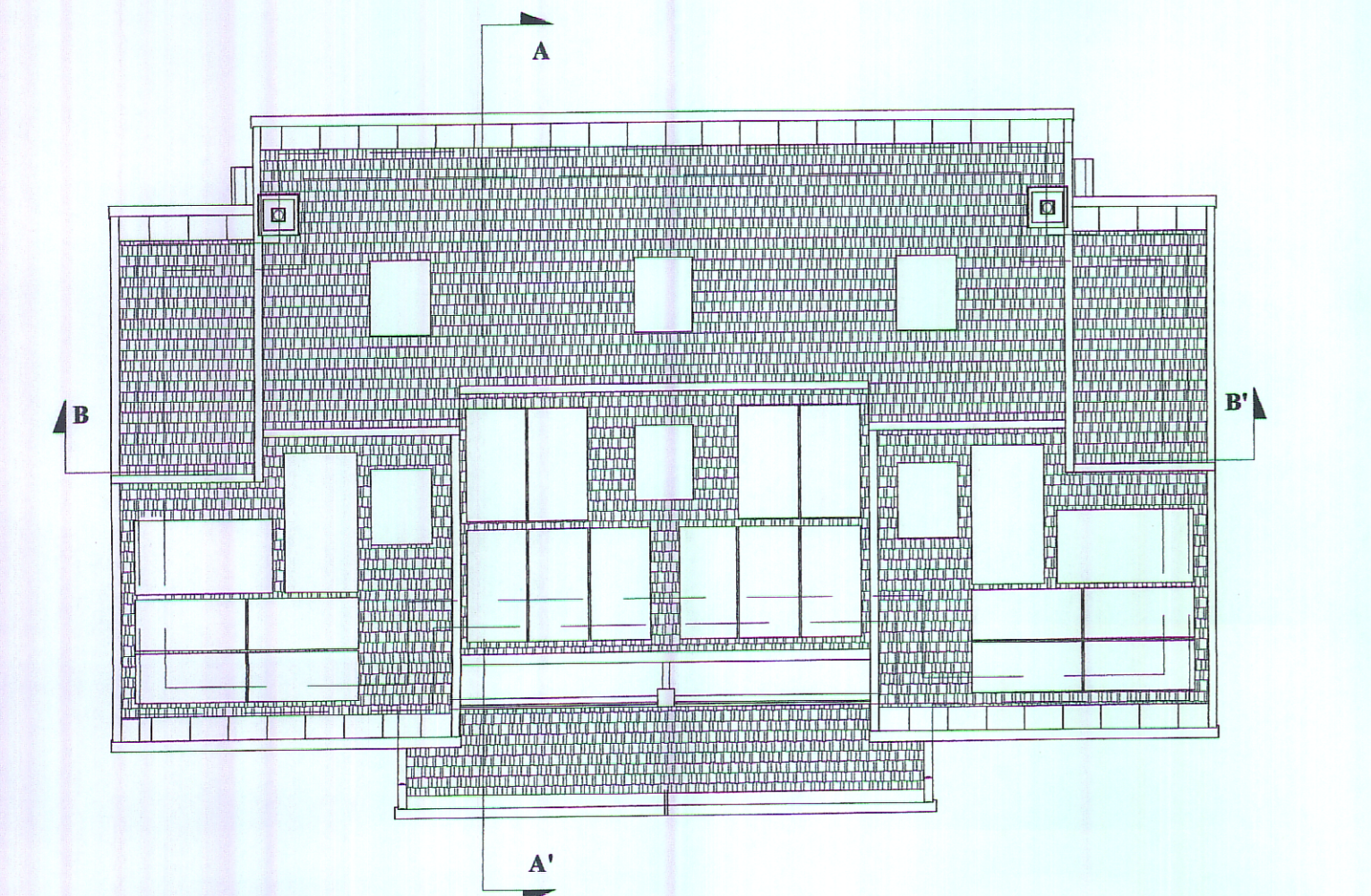
PIANTA PIANO PRIMO



PIANTA SOTTOTETTO



PIANTA COPERTURE



Si interpreta la pianta del piano sottotetto del progetto approvato quale sezione della copertura a falde eseguita ad una determinata quota e non quale sezione di murature interne, peraltro non presenti in sezione.

COMUNE DI STELLA
 Pr. n.°
 26 SET. 2012
 Resp. il

PROVINCIA DI SAVONA
 COMUNE DI STELLA-FRAZIONE S.MARTINO
 LOCALITA' BIGLINI DI TEGLIA

RICHIEDENTE: ABC s.r.l.
 Via Fieschi, 8/9
 16121 GENOVA - ITALIA
 P.I.: 01424930996

ABC s.r.l.
 VIA FIESCHI 8/9
 16121 GENOVA
 16121 GENOVA

S.U.A. DI INIZIATIVA PRIVATA "BIGLINI 2"
 VARIANTE IN CORSO D'OPERA
 AL PERMESSO DI COSTRUIRE LOTTI 8-9-12

TITOLO: LOTTO 8 - PIANTE
 PROGETTO APPROVATO - VARIANTE - CONFRONTO

PROGETTISTA: ING. MAURIZIO GNUDI
 Studio di Architettura ed Ingegneria gnudi

08.1
 SCALA 1:100
 26 SET. 2012