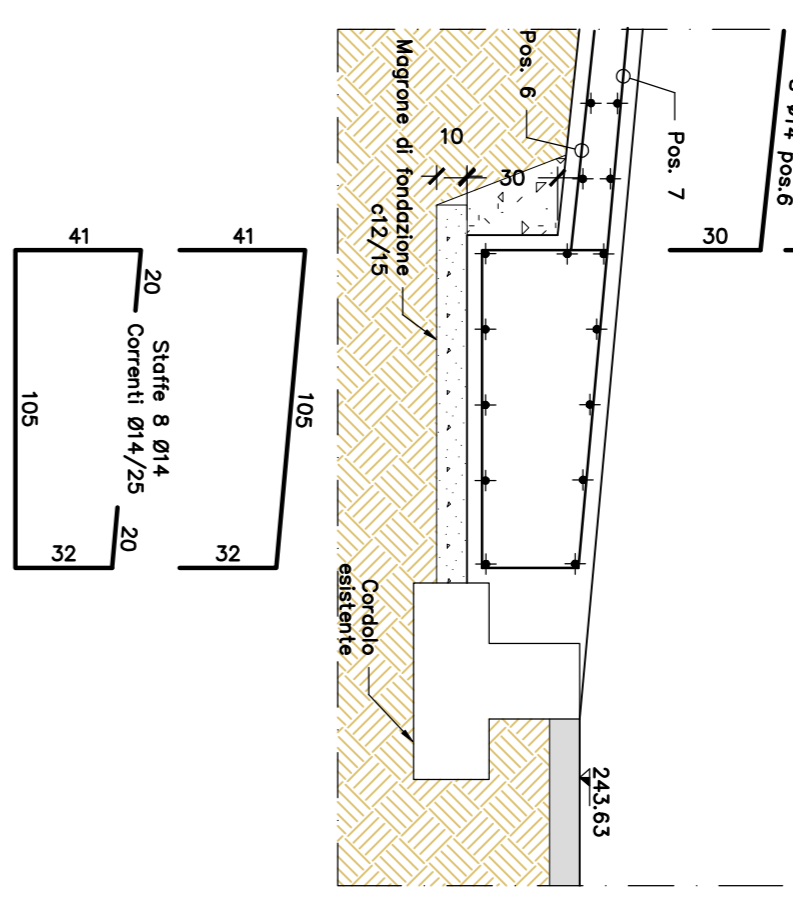
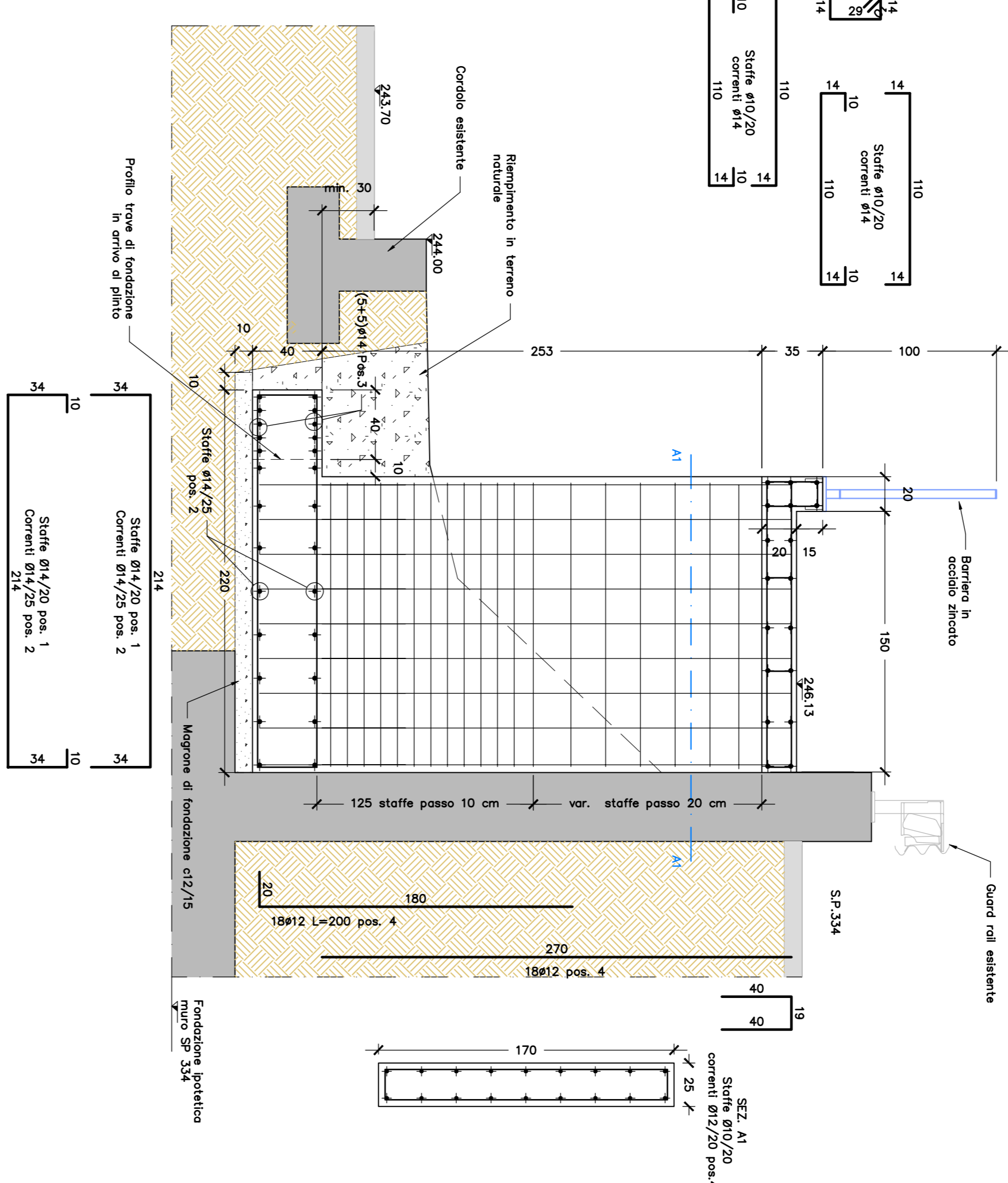


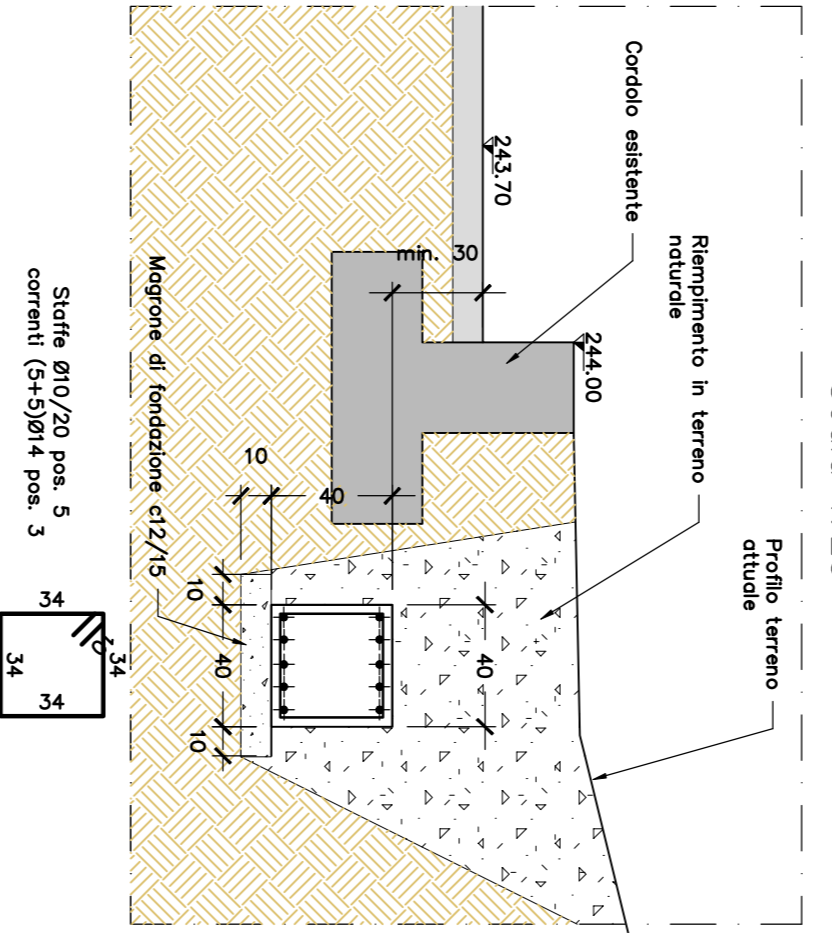
SEZIONE D-D
PUNTO PIO
Scala 1:25



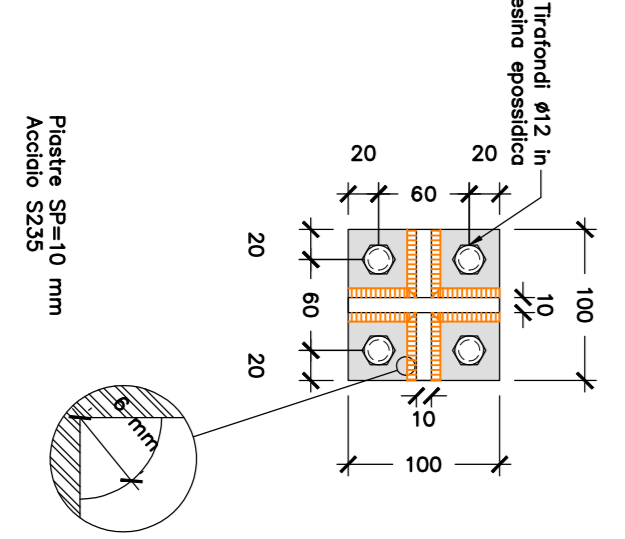
SEZIONE A-A
SETTO IN C.A.
Scala 1:25



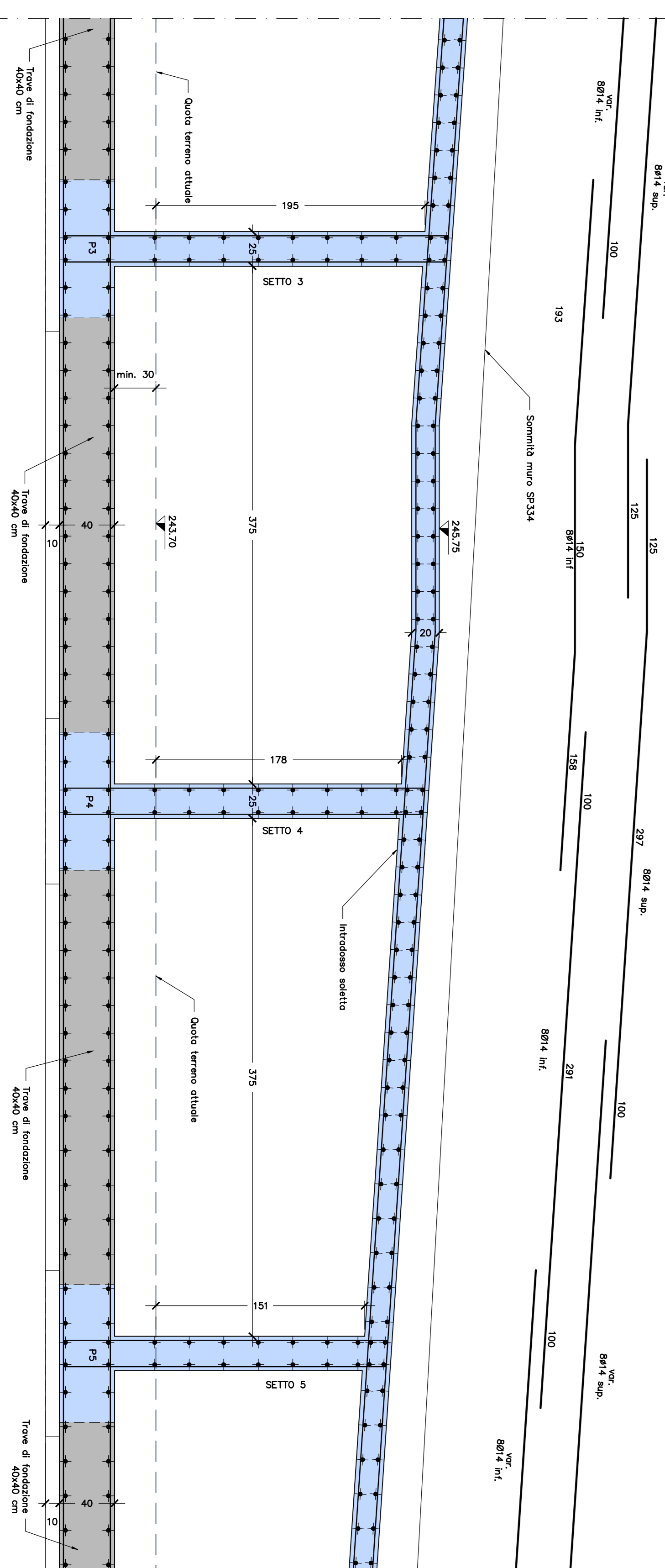
DETTAGLIO TRAVE DI FONDAZIONE
Scala 1:25



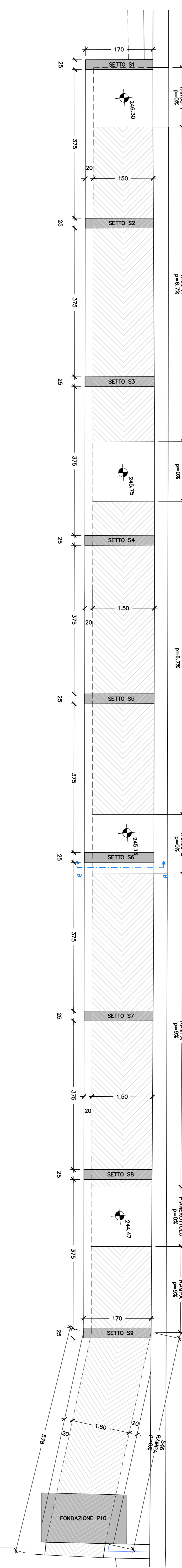
DETTAGLIO PASTIRE
Scala 1:5



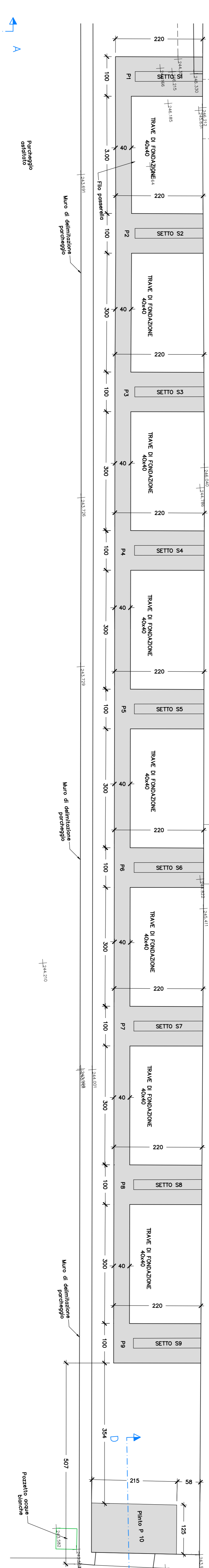
DETTAGLIO ARMATURA CAMPATA
Scala 1:25



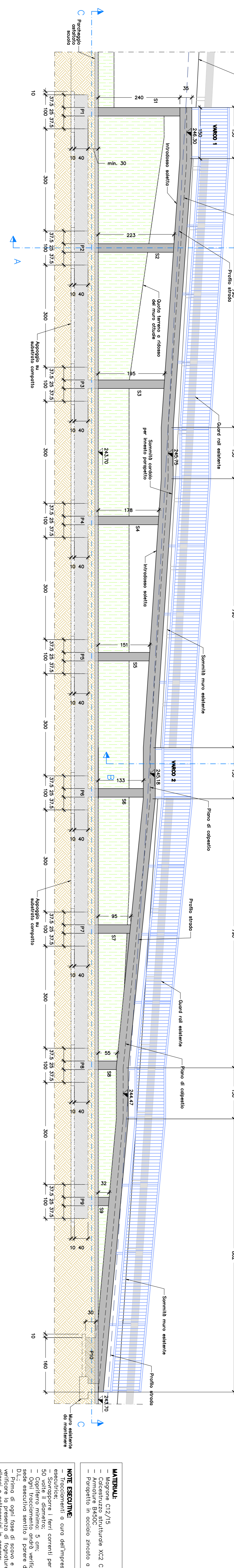
SEZIONE C-C
PLANIMETRIA IMPALCATO
Scala 1:50



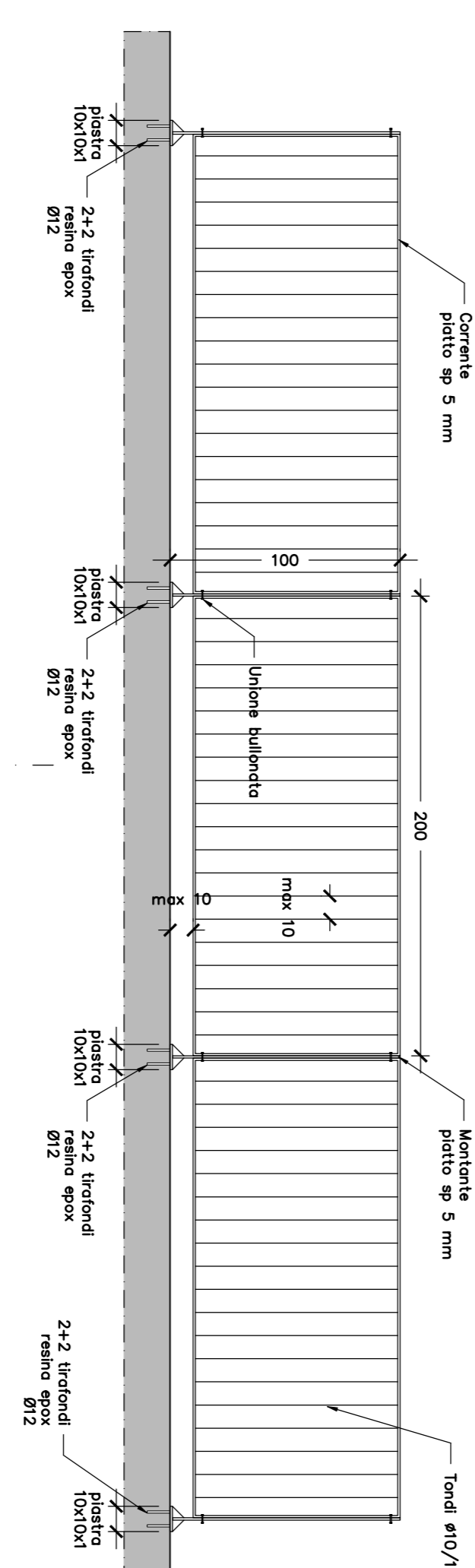
PLANIMETRIA OPERE DI FONDAZIONE
Scala 1:50



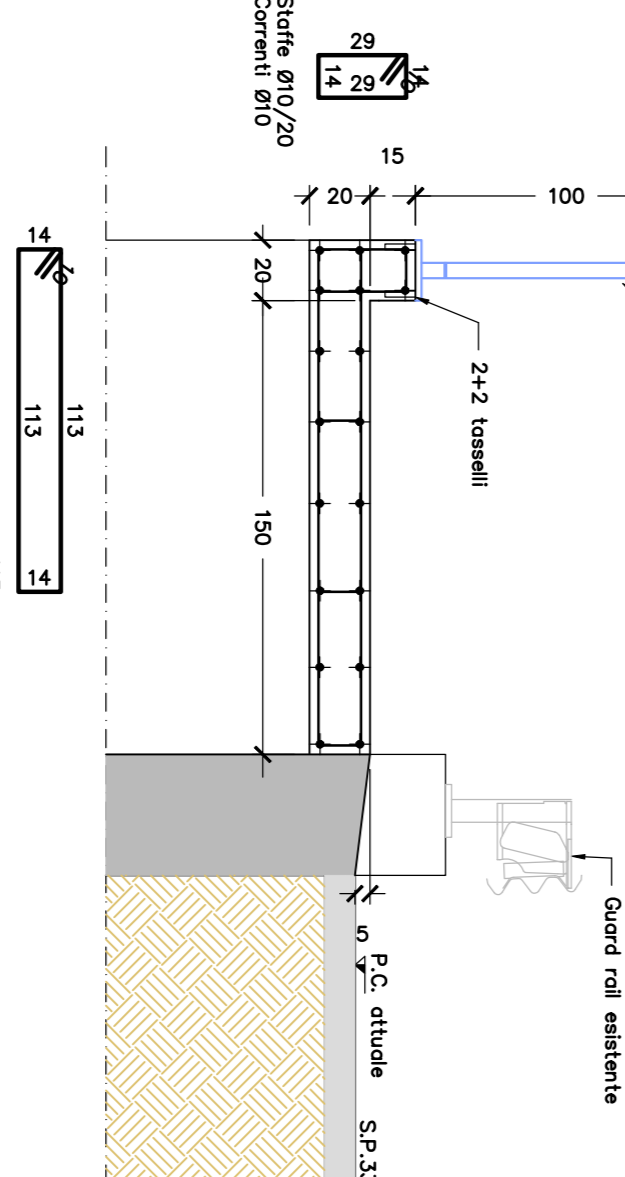
PROSPETTO
Scala 1:50



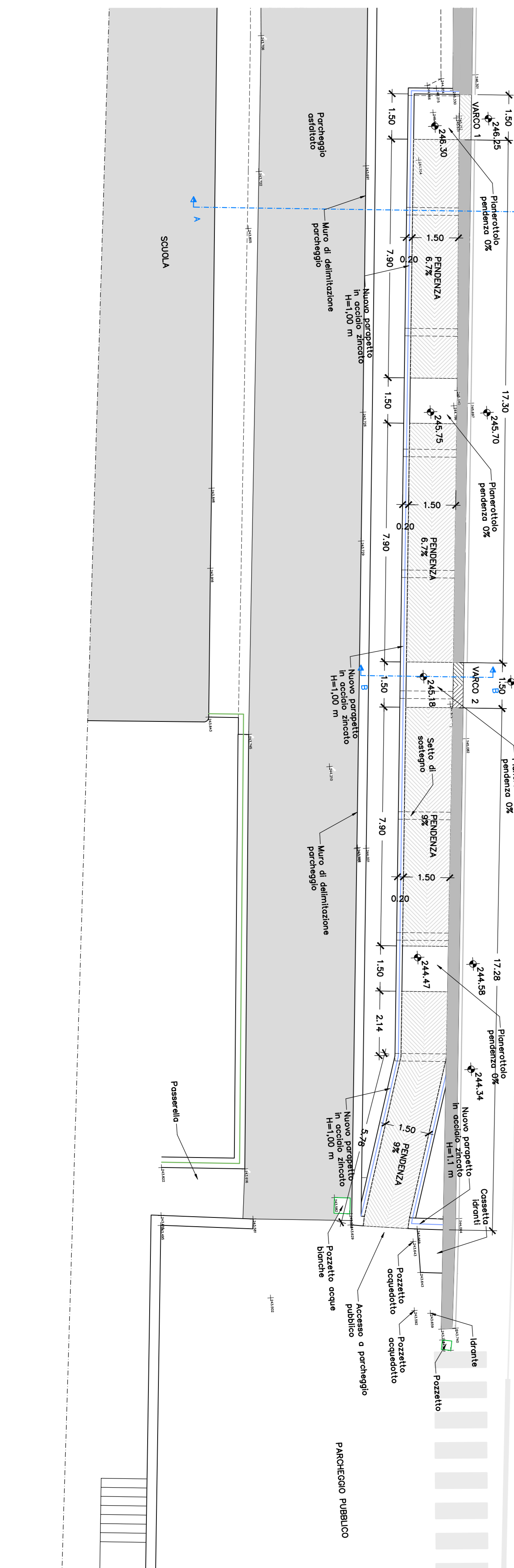
DETTAGLIO PARAPETTO
Scala 1:25



SEZIONE B-B
Scala 1:25



PROGETTO ARCHITETTONICO
Scala 1:100



NOTE:
- Materiali: Cemento C32/35, Acciaio S235, S275, S355.
- Dimensioni: Tutte in millimetri.
- Spessori: Tutti in millimetri.
- Tolleranze: Come indicato nelle norme di riferimento.
- Note: Il progettista non è responsabile per l'uso non previsto delle opere.

Staiques
Comune di Stella
Provincia di Salerno

REALIZZAZIONE PASSERELLA ROVIELO SUPERIORE
Ing. Roberto Desiato
Ing. Paolo Pardi
Ing. Andrea Forcillo
Ing. Guido Russo
Ing. Guido Russo

2

SCALE: 1:25 - 1:50 - 1:100
DATA: apr-18
CANTIERE: